

GASSNER

— STAINLESS STEEL POOLS —

History

New location
Neuzeug, Austria

Enlargement
production (2. hall)

Takeover by



1970

Foundation by
Johann Gassner

1995

1998

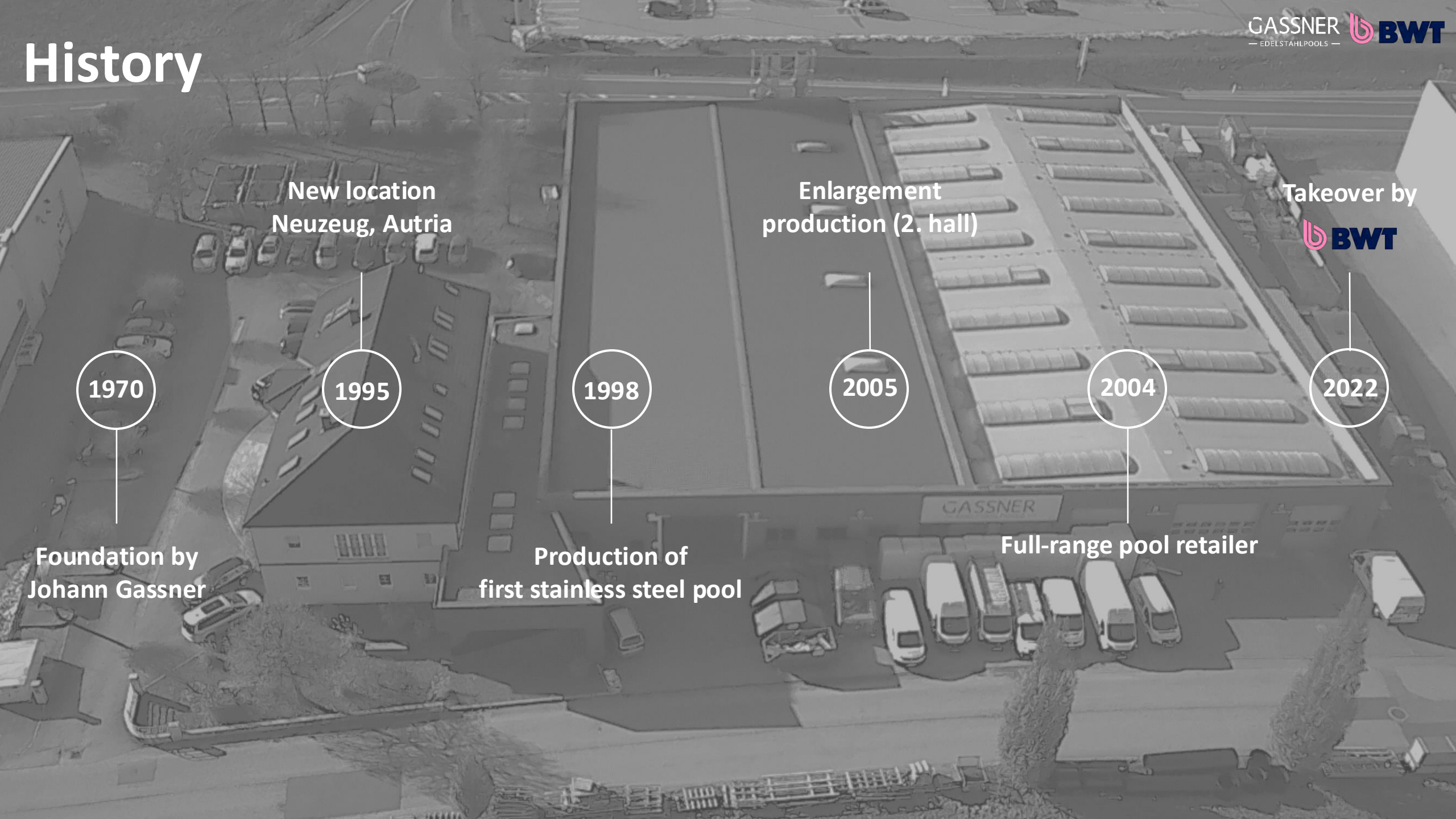
Production of
first stainless steel pool

2005

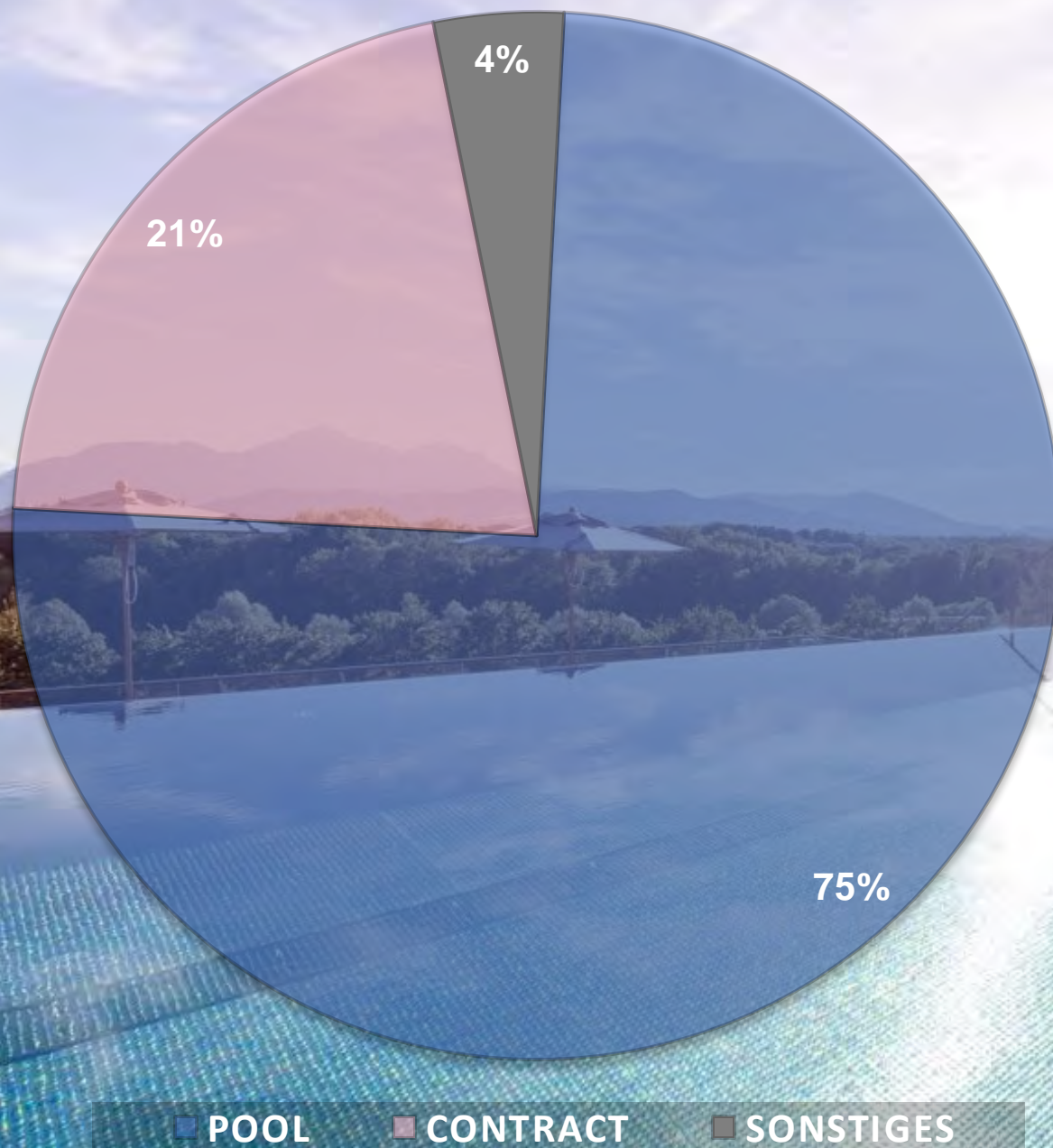
2004

Full-range pool retailer

2022



INTERESTING AND
VARIED COMBINATION OF
DIFFERENT AREAS,
THIS MAKES US MORE FLEXIBLE AND
MUCH MORE INDEPENDENT OF
SEASONAL FLUCTUATION





WHY
GASSNER ?

Free-standing pool

- ✓ No need for concrete tub or supporting walls and thus no breakthroughs (interfaces)
- ✓ As standard with 6 cm insulation on floor and walls

Installation in concrete tub

- ✓ Despite concrete walls, static stiffening of pool-walls, only their load is transmitted to the wall
- ✓ Insulation directly on the pool with glue and holders, therefore hardly any formation of condensate
- ✓ Nice flatness of the walls during and after water filling due to supporting construction



Skimmerpool

- ✓ Gassner stainless steel skimmer (firmly welded and permanently leak-proof)
- ✓ Unique high water-level of approx. 5 cm (waterline until top edge)
Skimmer-top edge minus 35 mm – according to shape and floor covering
- ✓ Skimmer-dirt-basket removeable from water side → no revisions
- ✓ Skimmer width 235 mm or 400 mm

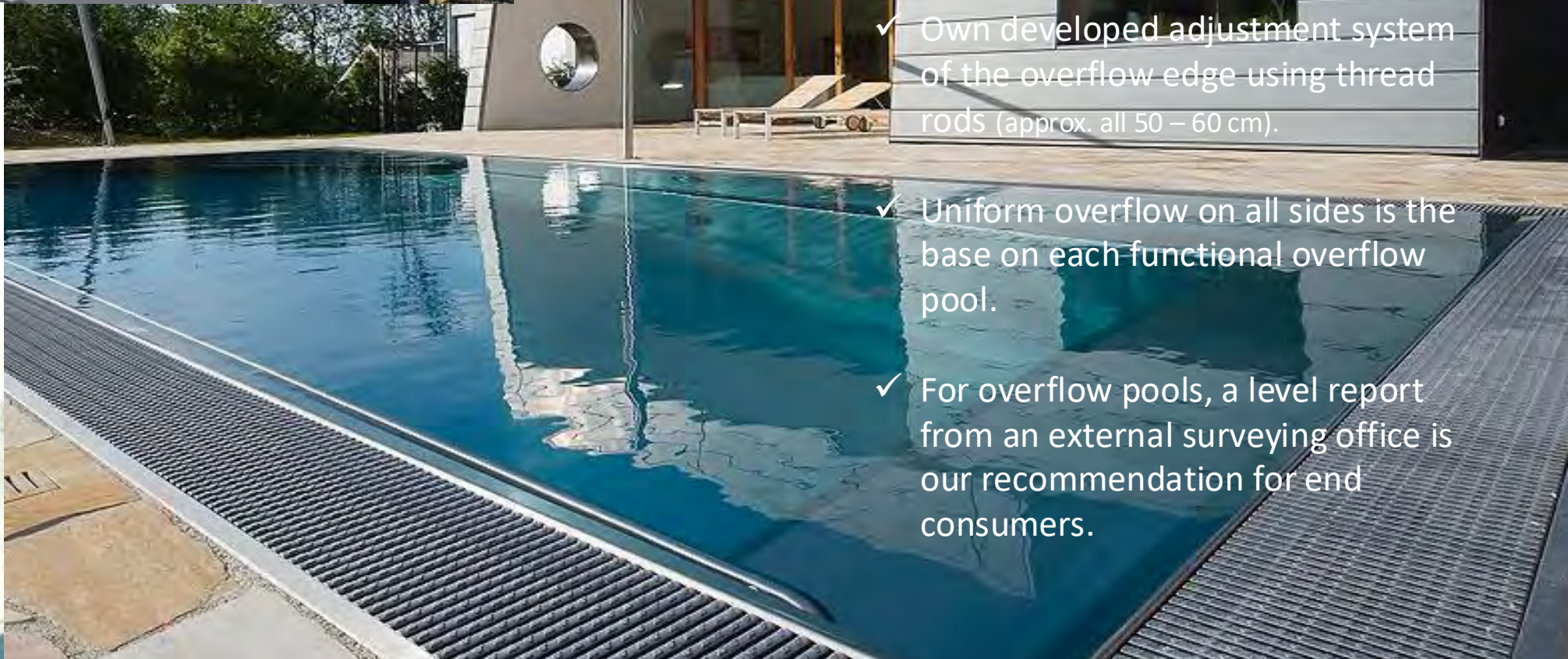
Mirrorpool





Overflow pool

- ✓ Own developed adjustment system of the overflow edge using thread rods (approx. all 50 – 60 cm).
- ✓ Uniform overflow on all sides is the base on each functional overflow pool.
- ✓ For overflow pools, a level report from an external surveying office is our recommendation for end consumers.



Nubs

- ✓ Nubs of the pool floor is adapted to the shape of the pool
- ✓ Same distance to walls and stairs
- ✓ All floor parts are including nubs as a standard
(more nice optic, smaller scratches and welding lines are getting less visible)
- ✓ Nubs are according to standards and guarantee best possible safety for not slipping

Round transition

- ✓ Between floor and wall → better flow in terms of dirt or deposits, no chance to settle and forming streaks
- ✓ 100% cleanable transition, additional support for all kind of pool cleaners, which climb up walls through reducing the distance in the non-existing edge of the pool.

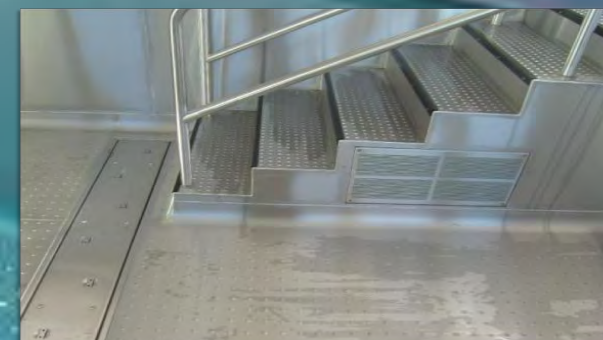


stairs flexible and individual

Free-carrying stairs (max. with 60 cm)



Stairs in the corner



Public stairs
(incl. Step marking and handrail)



Stairs with pool-cover-bench

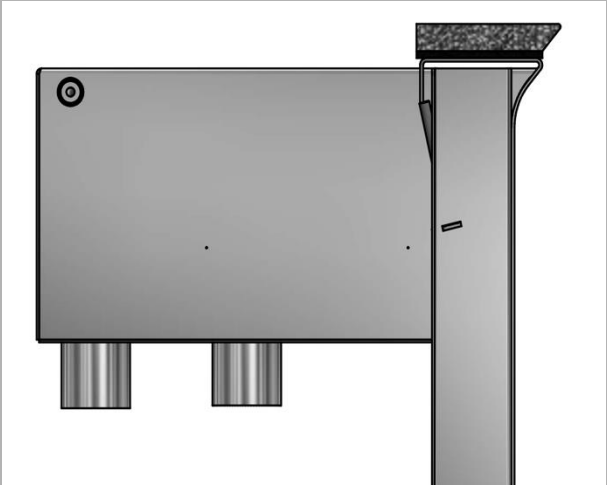
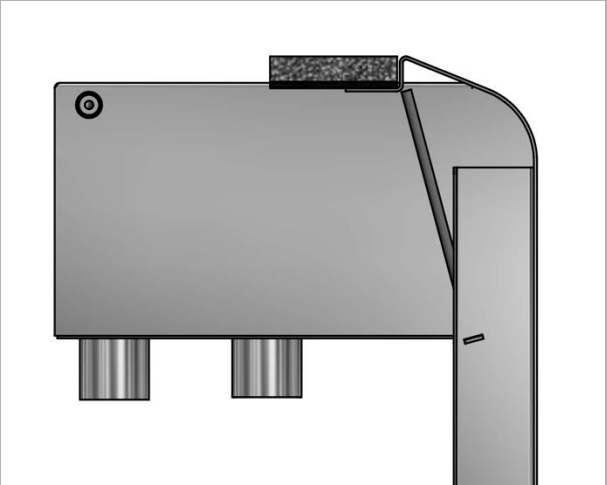
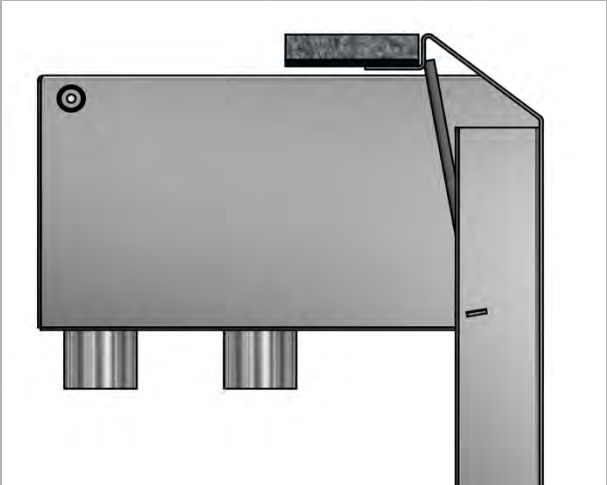
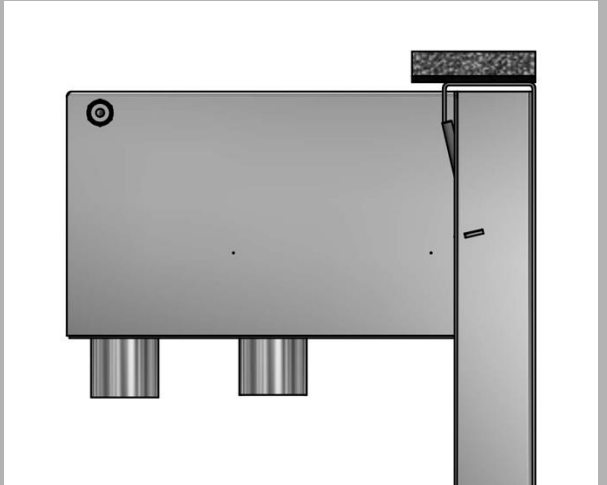
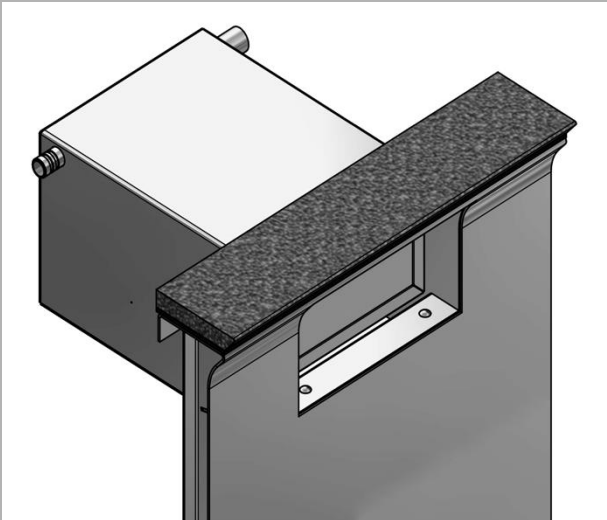
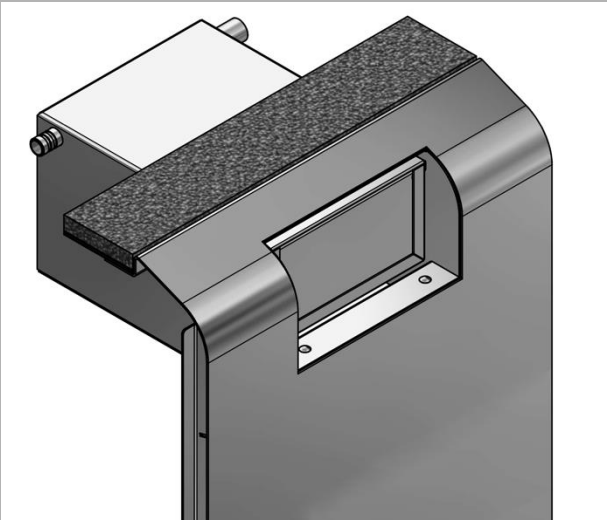
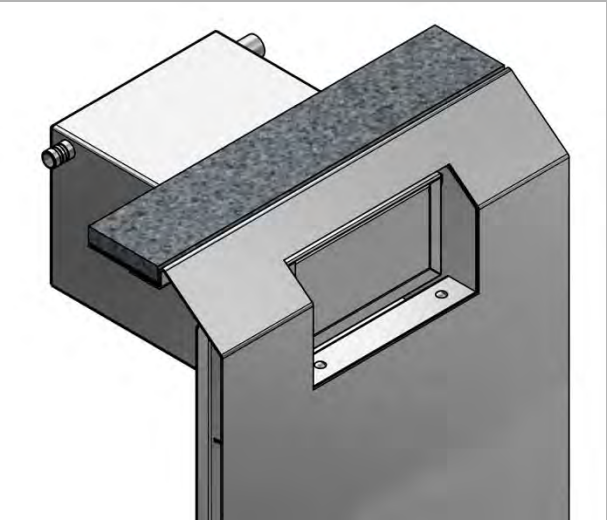
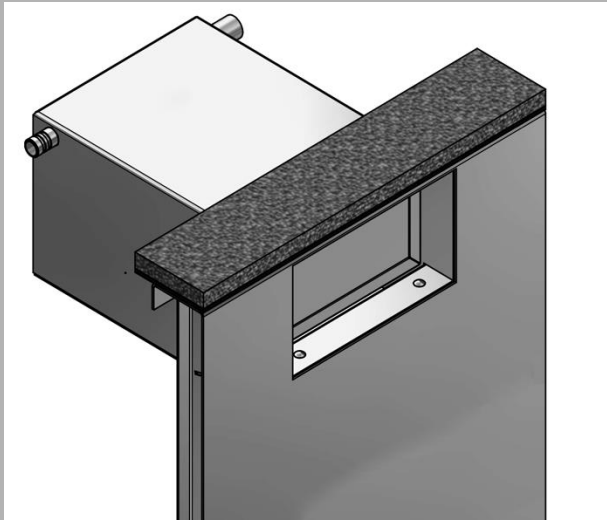


Stairs with podium



Custom made stairs

Individual ending (Skimmer)



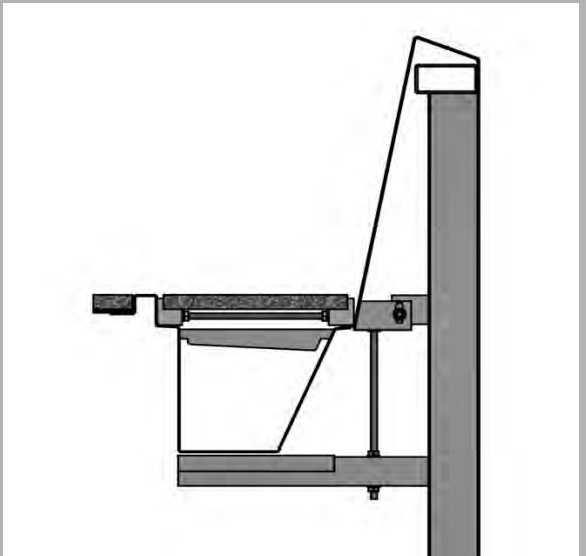
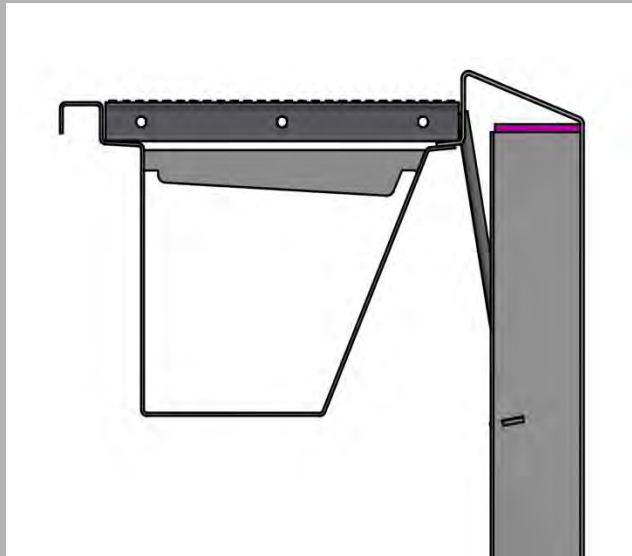
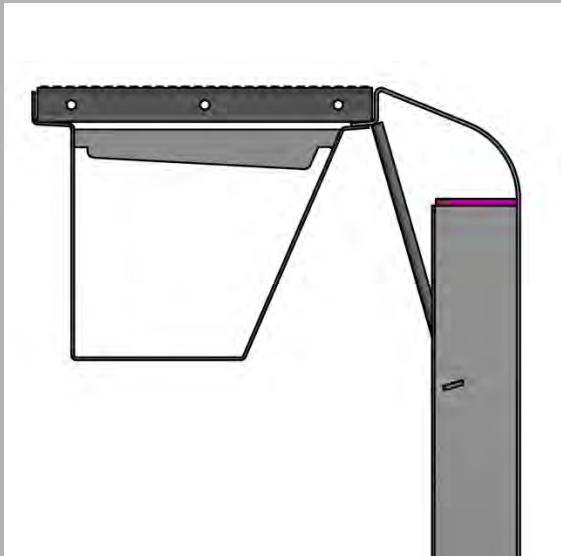
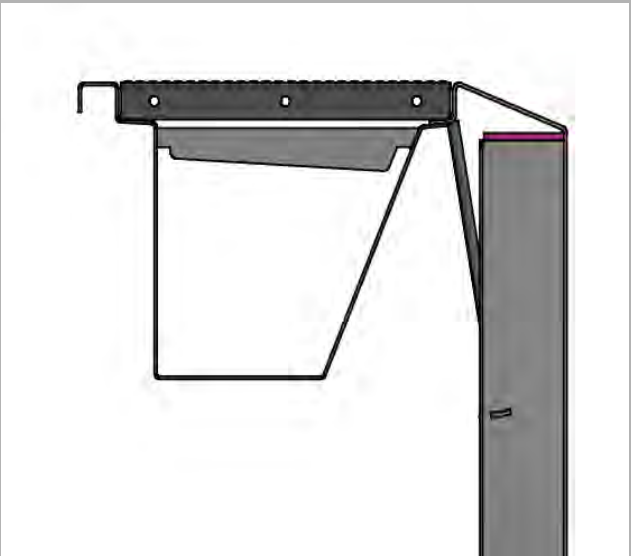
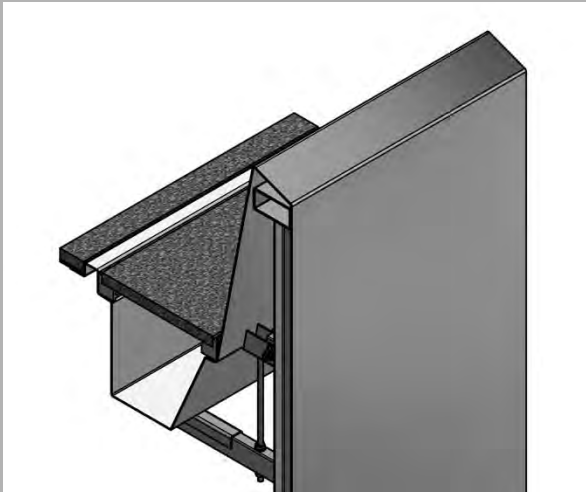
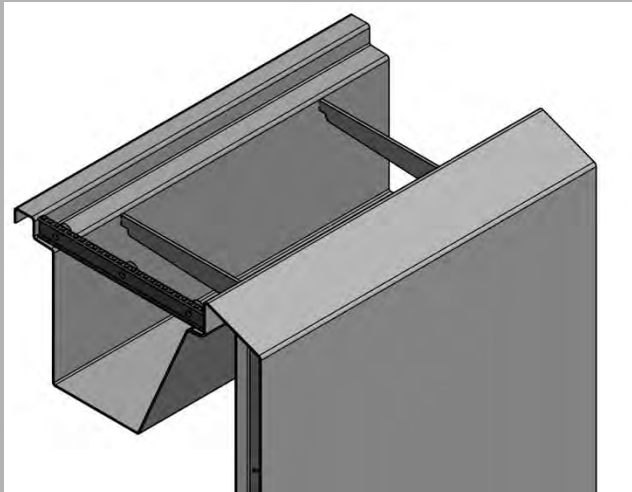
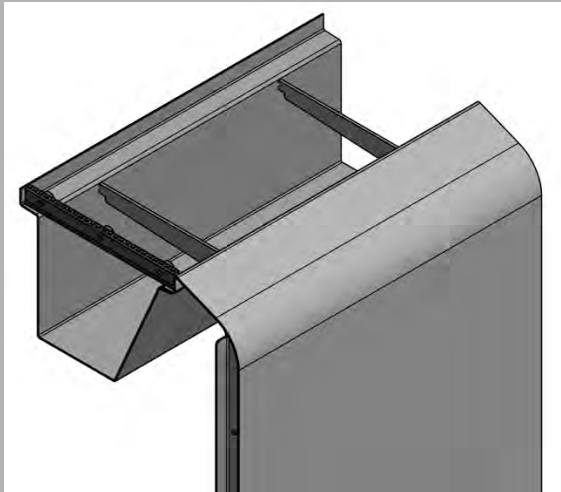
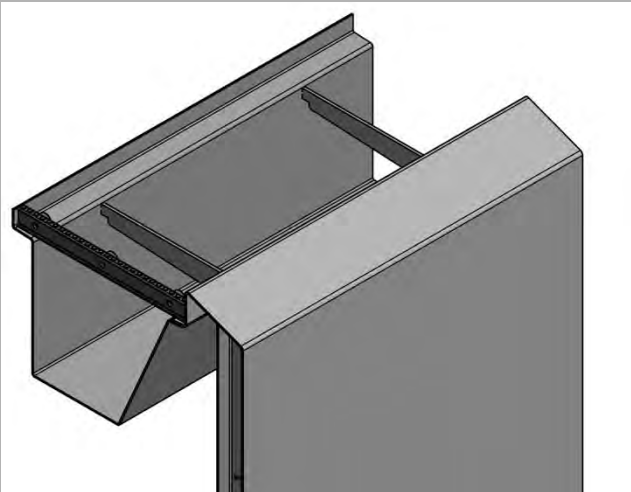
straight
(floor cover above)

slant
(floor cover afterwards)

round
(floor cover afterwards)

Wavereflection
(floor cover above)

Individual ending (overflow)



slant

round

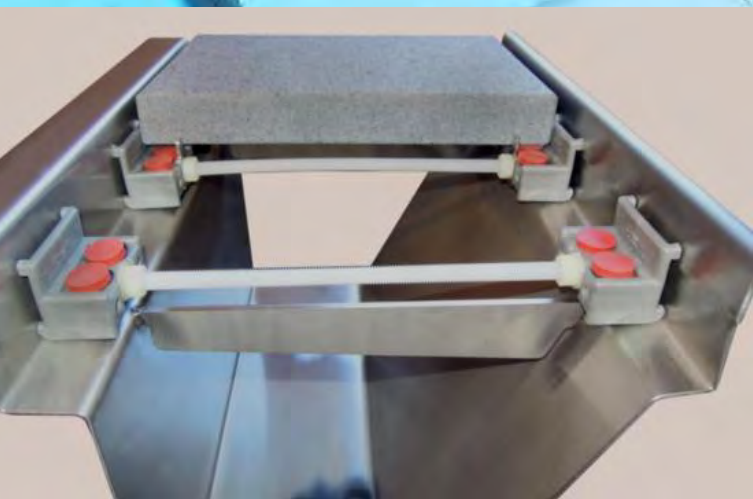
slant
(with grip edge)

Infinity
(water curtain)



Overflow channel covered with stone

- ✓ flexible and individual
- ✓ Minimal punctual support on stainless steel
- ✓ Easy to take out for cleaning
- ✓ holders for permanent and constant, uniform Spaces



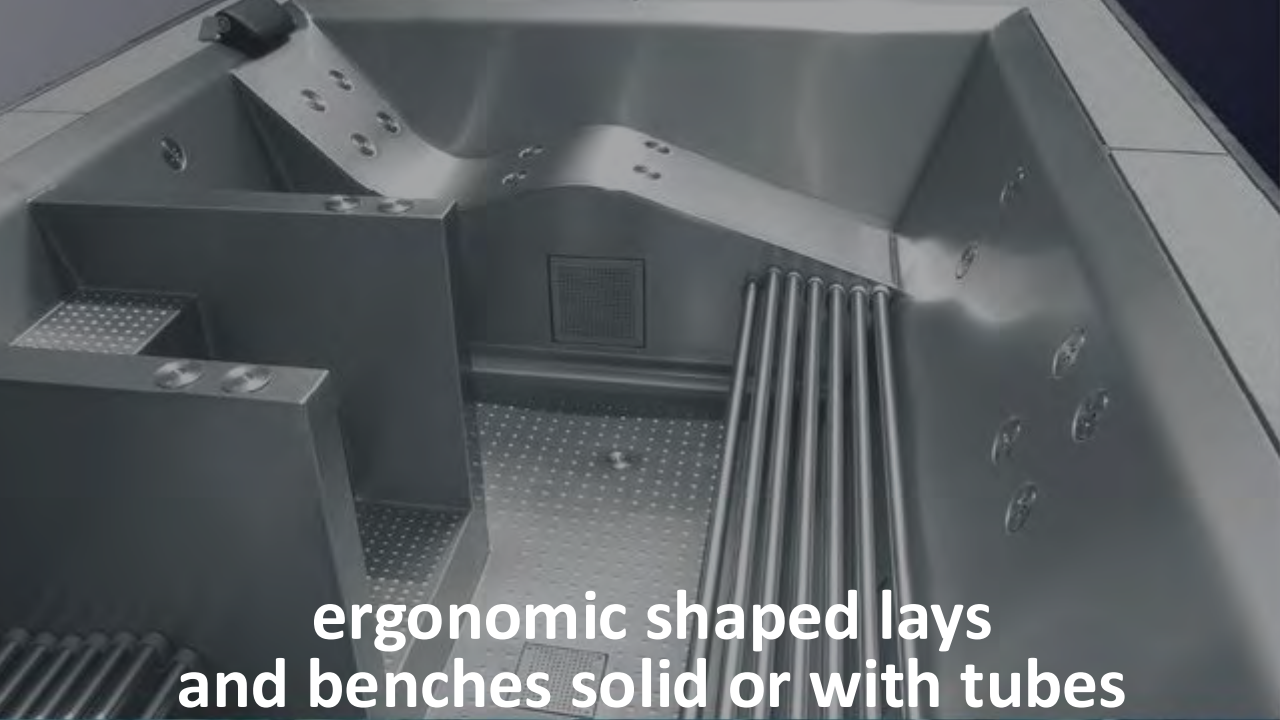
Pool-cover bench (foldable)

- ✓ Easy and also underwater revisable
(2 secure screws)
- ✓ Front cover without visible screws
(excluding combination with air-bubbles)
- ✓ Front covers easy to takeout on folded up
bench



Flush fitting ending in the pool walls of all Gassner built-in components





**ergonomic shaped lays
and benches solid or with tubes**



air-bubble nozzle



floor bubbles



countercurrent system

SEE THE DIFFERENCE



GASSNER

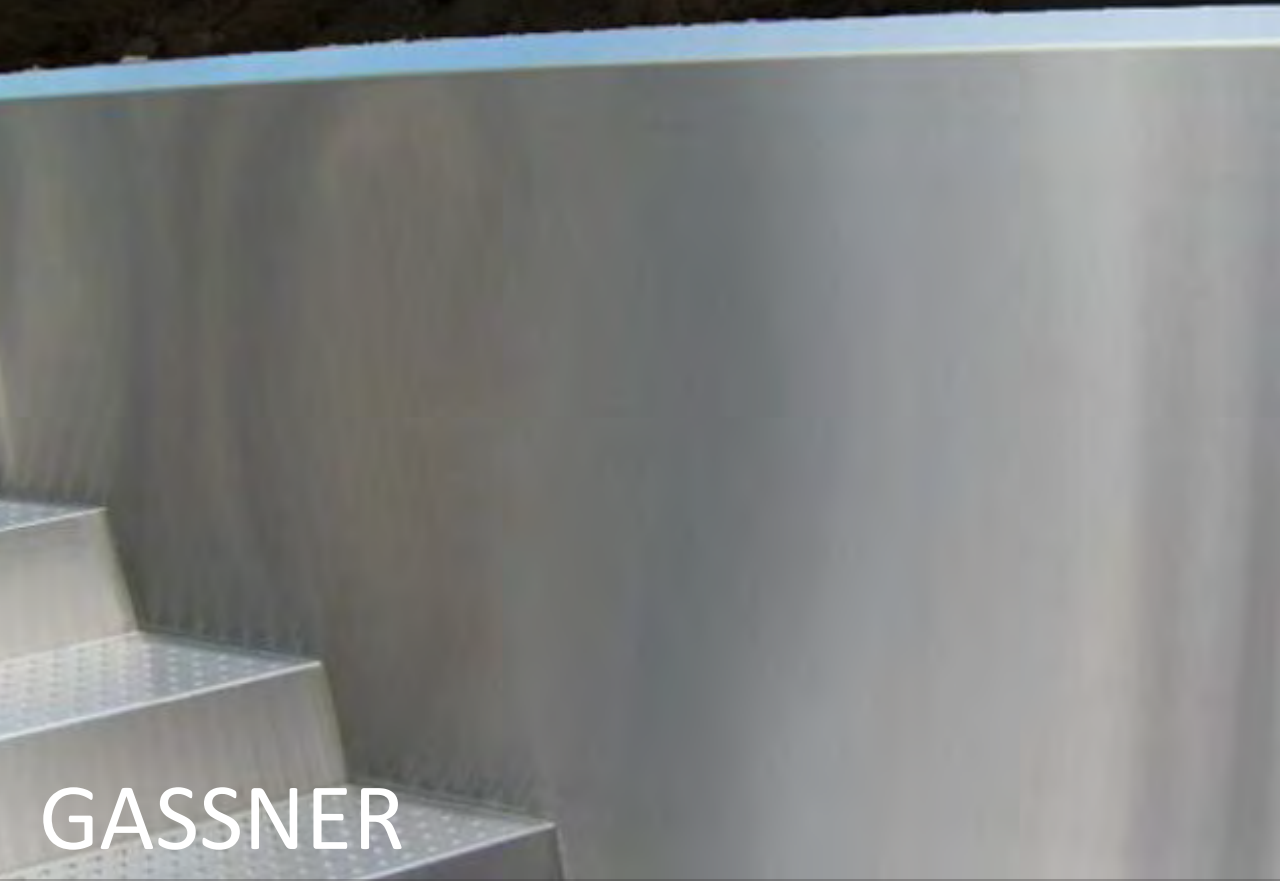
- ✓ Very high water level
- ✓ Skimmer-dirt-basket removeable from water side
- ✓ no revisions on the floor cover outside the pool
- ✓ Different endings, also on skimmer pools



competitors

- ✓ Very low water level in cause of built-in skimmers
- ✓ revisions outside of the pool
- ✓ Top edge ending only with 90° on skimmer pools

SEE THE DIFFERENCE



GASSNER

- ✓ Pool walls almost without visible welds thanks to sophisticated assembly technology
- ✓ Walls and floor elements are glued together with XPS-Insulation plates (max. flatness).
- ✓ Insulation as standard with 6 cm XPS on floors and walls



competitors

- ✓ No round transition between floor and wall (dirt edge)
- ✓ Welding from the backside of the walls visible through high temperature during welding process

SIEH DEN UNTERSCHIED

competitors (public pool of Steyr, Austria)

- ✓ Using of ready-nubbed stainless steel sheets
- ✓ No brushed material
- ✓ Partially cut nubs
- ✓ No uniform distances to walls and stairs
- ✓ Sloppy workmanship



**FOCUSED
INNOVATIVE
MODERN**



POOLSYSTEMS ACCORDING TO REQUIREMENT



PRIVAT

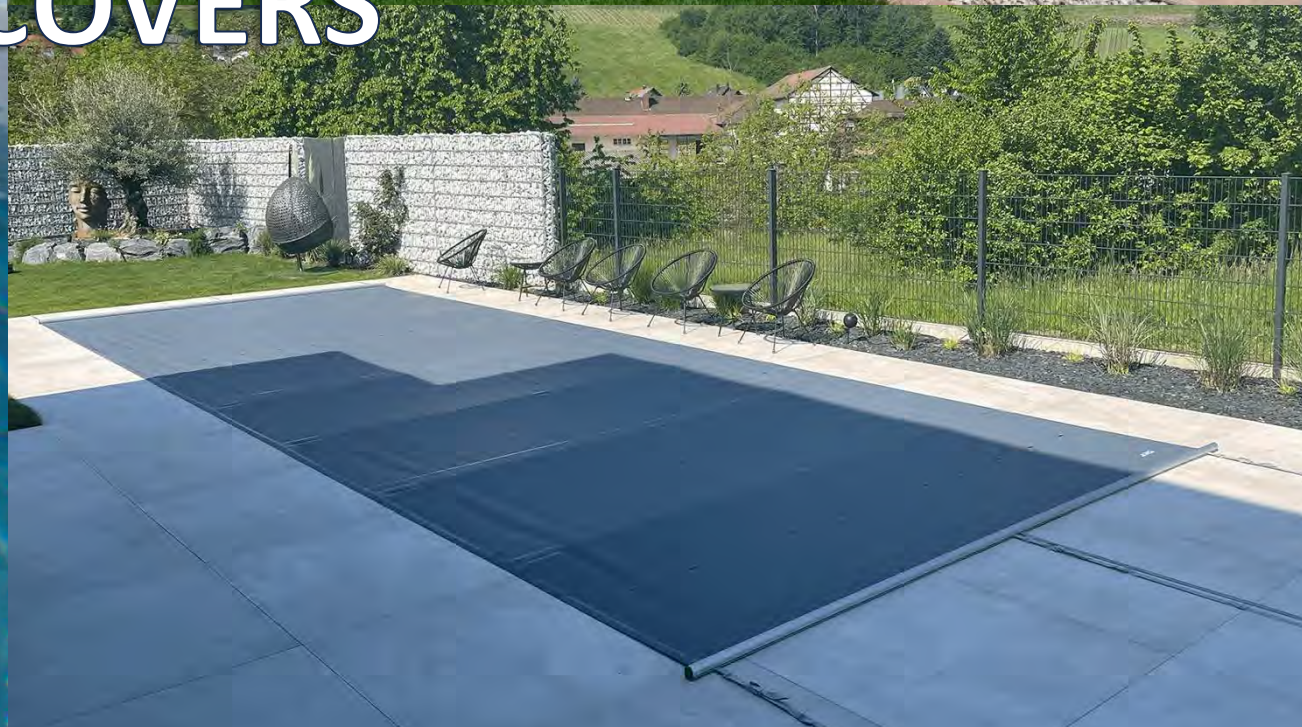


GASSNER  BWT
— EDELSTAHPOLLEN —

PUBLIC

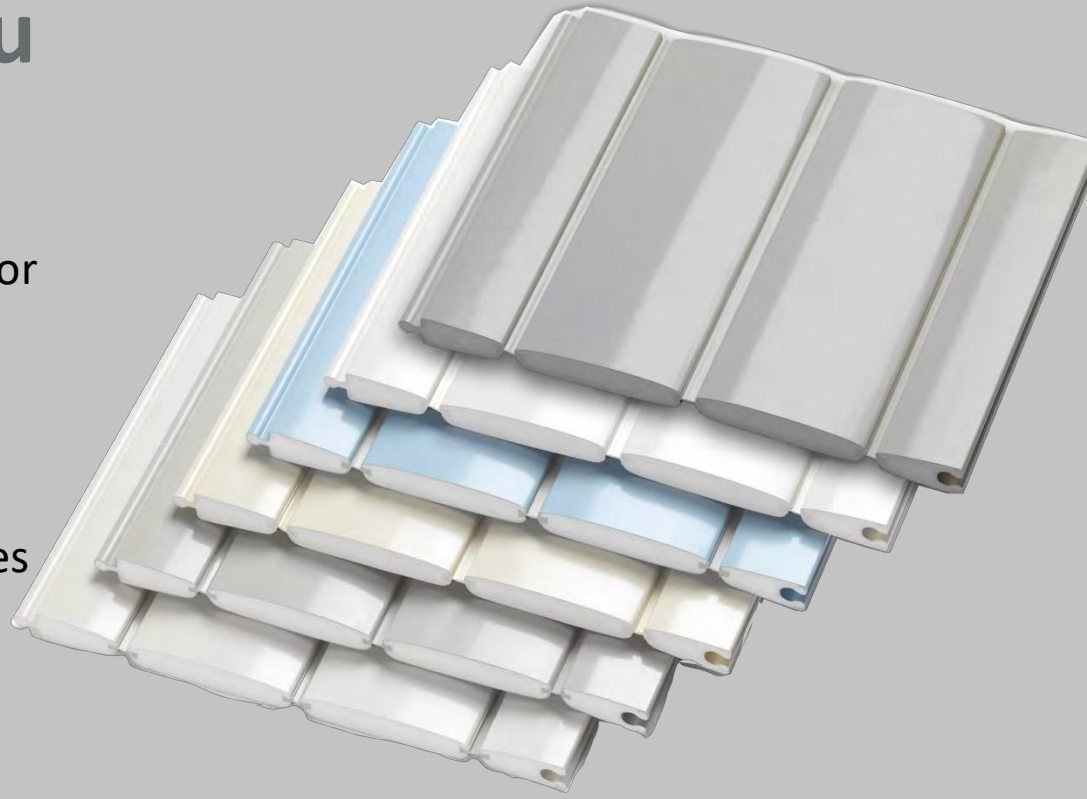


POOL COVERS



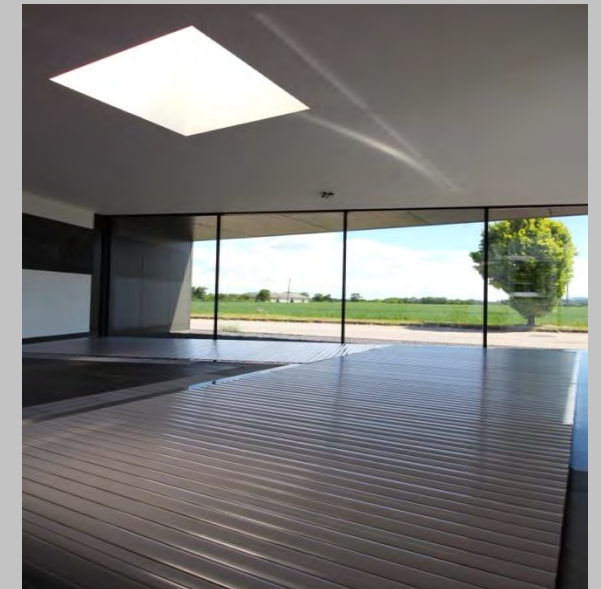
COVREX by Rehau

- ✓ foamed profile
- ✓ tongue-and-groove connection or PUR hinge (extrusion process)
- ✓ sophisticated design
- ✓ extraordinary material properties
- ✓ Imcomparably easy to clean



- ✓ foamed slats, no hollow chambers and endcaps
- ✓ weather-resistant, therefore all year usable (-20° - +70° C)
- ✓ very high hail resistance
- ✓ Suitable for unusual pool shapes
- ✓ well insulated

- ✓ closed, easy-to-clean surface
- ✓ high storm- & child safety in combination with patented PROTECTION SYSTEM
- ✓ individual cutting of profiles on Installation on site – picture
- ✓ Saving of swimming pool chemistry and heating costs up to 80%





Unique child safety in combination with patented PROTECTION SYSTEM and integrated handrails in the pool



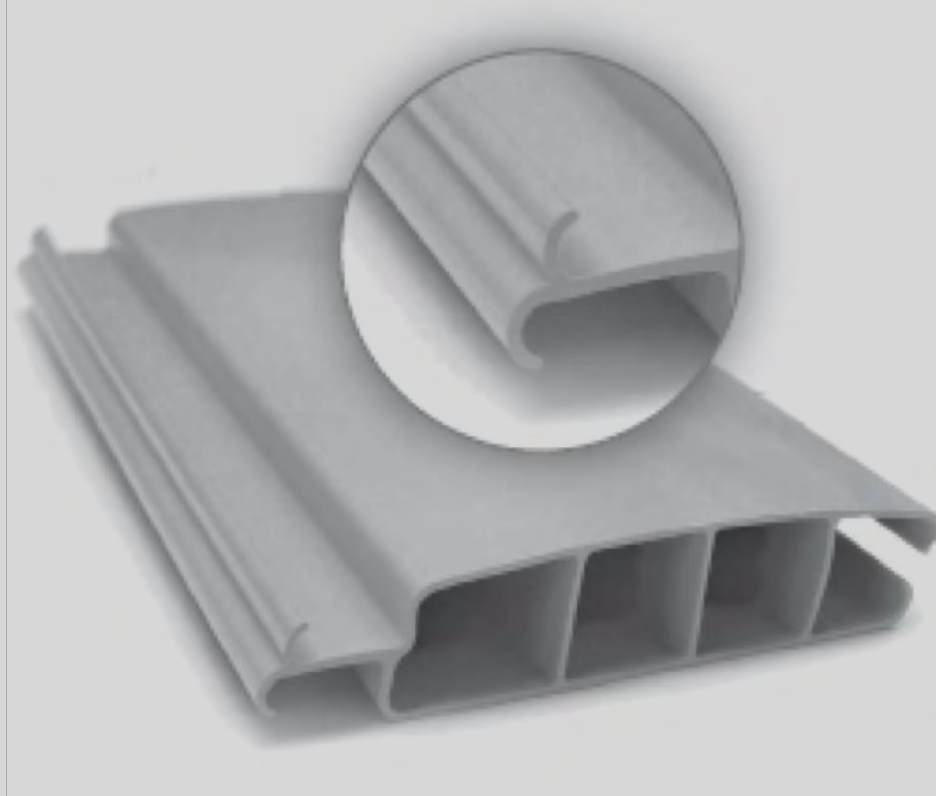
Protection System

- ✓ Form-fitting screwed plastic half shells
- ✓ Available in the fitting colors to COVREX by Rehau profiles
- ✓ Tensioning using a belt and ground anchor
- ✓ High child and storm safety

Hollow chamber profiles of PVC and PC

Hollow chamber profiles made out of PVC or PC are characterized by their sophisticated design, regardless of the material.

Each slat is manufactured using the extrusion process.



Each slat with dimensions of 60 x 14 mm has three hollow chambers and with a double hook system, which lock into each other, which creates a solid pool cover

Hollow chamber profiles

PVC

- ✓ Cost-effective alternative
- ✓ Proven system for decades
- ✓ In the colors:
 - solar
 - transparent
 - white
 - grey,
 - ivory
 - light blue
 - dark blue



PC

- ✓ Very impact-resistant
- ✓ Temperature-resistant up to 120°C
- ✓ Largely hail-proof up to grain size 30 mm
- ✓ In the colors:
 - solar
 - transparent,
 - light blue-transparent,
 - dark blue-transparent,
 - green-transparent,
 - silber-transparent,
 - silber-solar

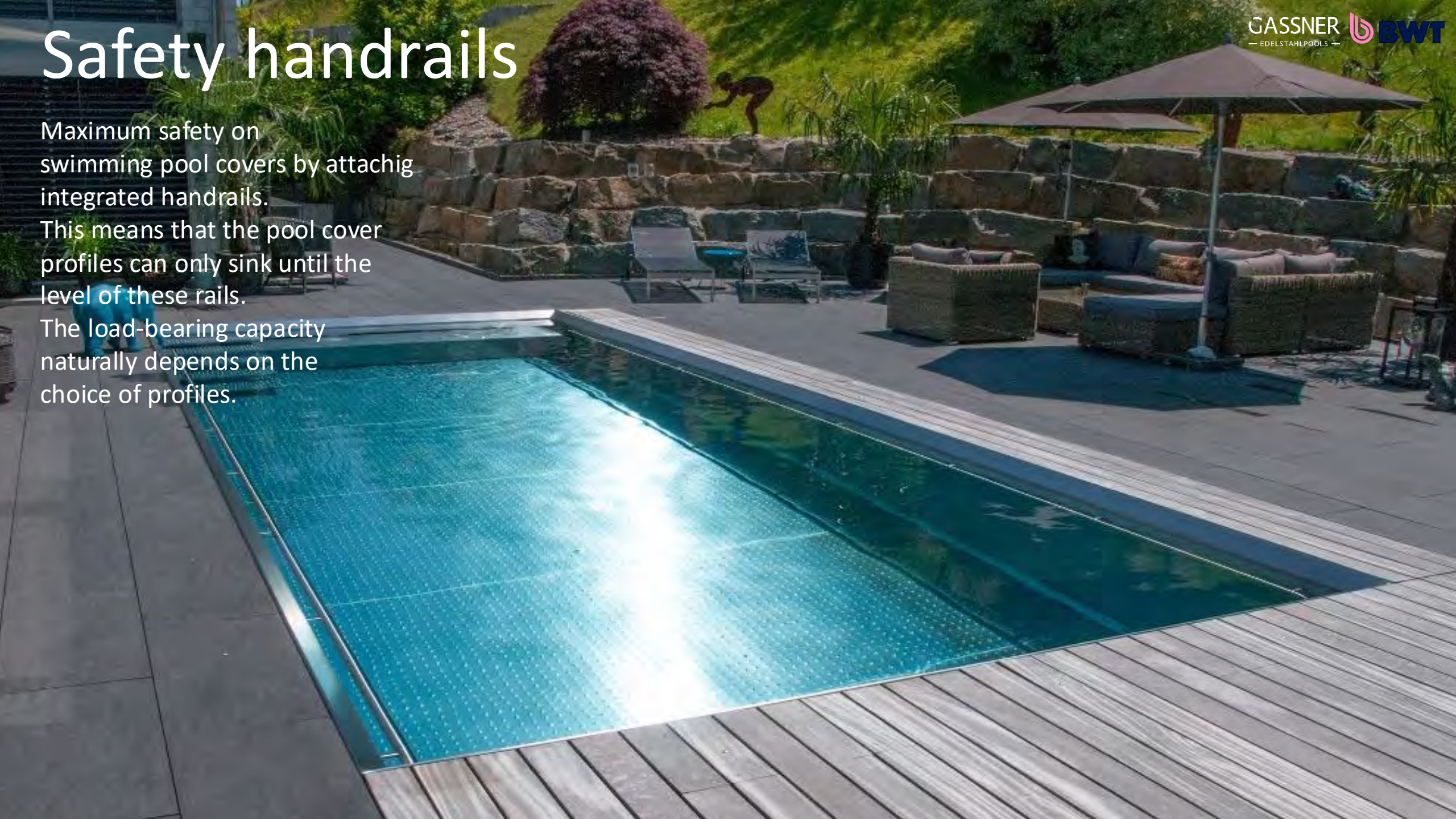


Safety handrails

Maximum safety on swimming pool covers by attaching integrated handrails.

This means that the pool cover profiles can only sink until the level of these rails.

The load-bearing capacity naturally depends on the choice of profiles.



Pool enclosures from our partner

GASSNER
— EDELSTAHPOLS —

 BWT





ONE-PIECE-POOL

- Skimmerpool up to a max inner width of 3,4 m
- Fast installation on site (1-2 working days)



TRANSPORT IN PARTS



- Extremely high degree of prefabrication (unmatched in the industry)
- Tailored to the situation on site

POOLMOMENTE ÖFFENTLICH







„DAS EDELWEISS“ Salzburg Mountain Resort in Großarl (AT)





Seegasthof „Hois´n Wirt“ in Gmunden (AT)









4 Star-Superior Hotel „CORTISEN“ in St. Wolfgang (AT)

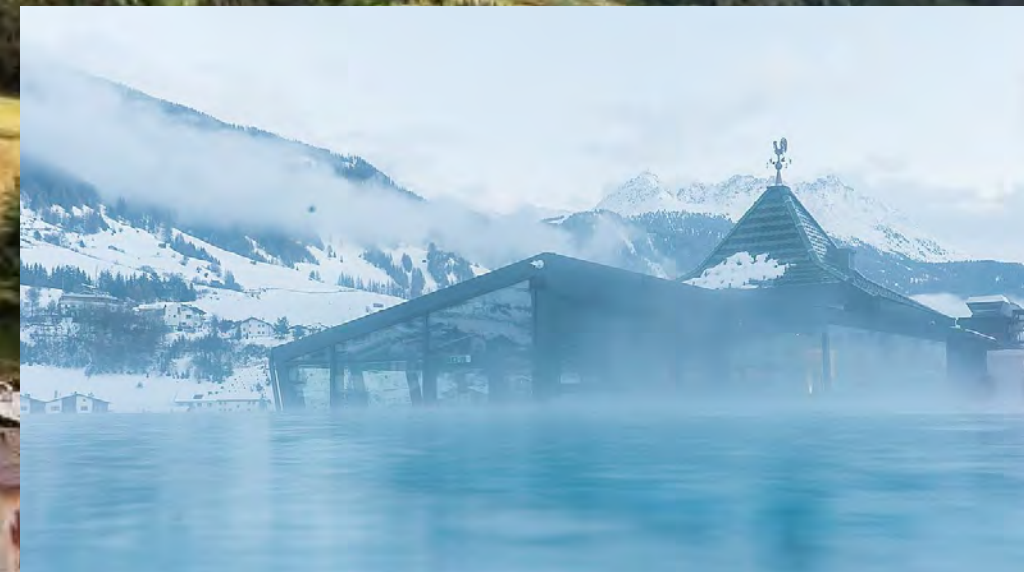


„Studio963“ Chalet in Mühlbach/Hochkönig (AT)





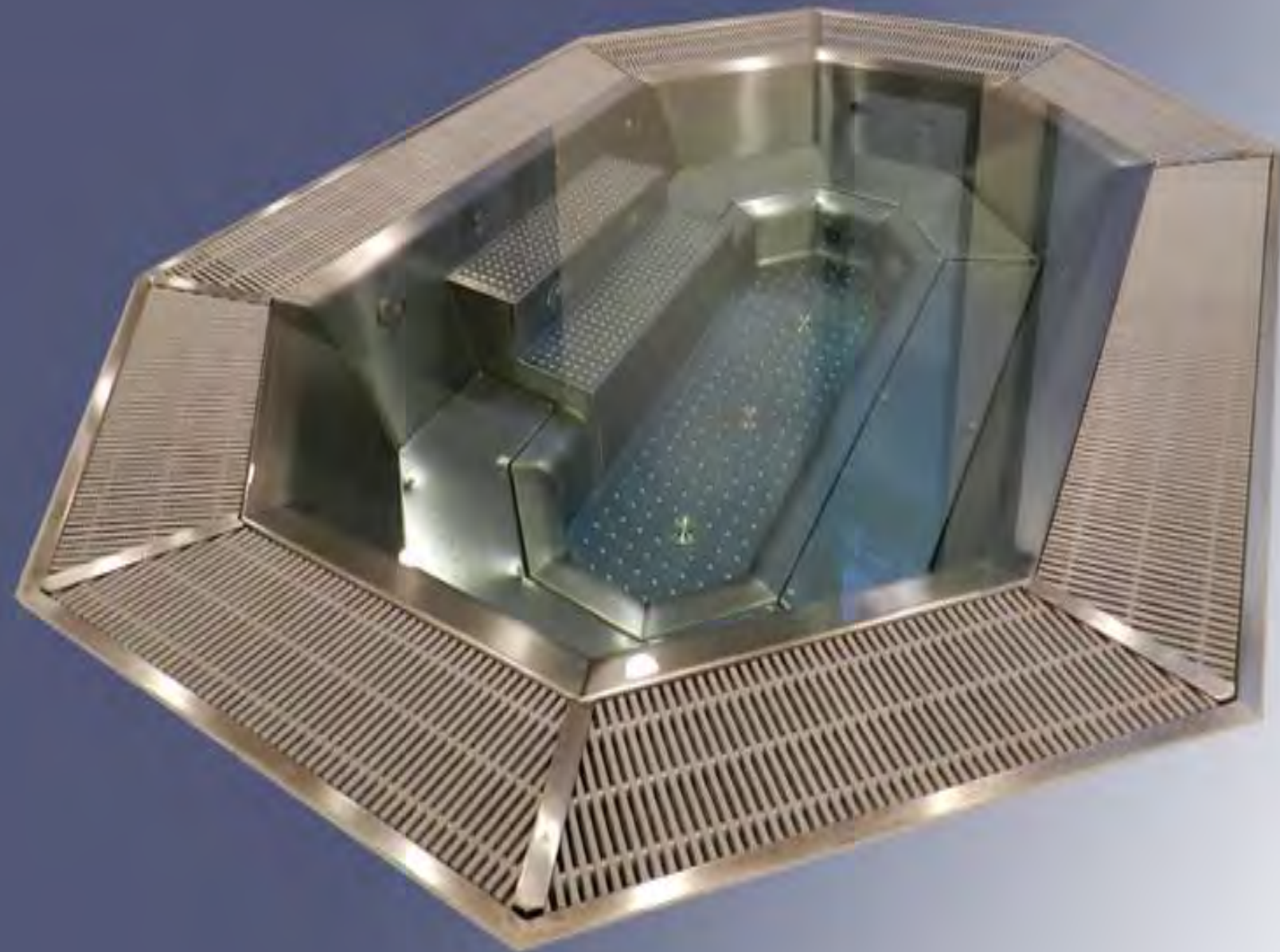






Fitnessstudio „Elements Siemensallee“ in Munich (DE)











Boutique Hotel „Ultima“ in Gstaad (CH)



Hotel „Das Bachgut – Resort am Berg“ in Hinterglemm (AT)

A photograph of four children (two girls and two boys) lying on their stomachs on the edge of a swimming pool. They are all wearing sunglasses and smiling. The girl on the far left has braided hair and is wearing a yellow swimsuit. The boy next to her has dark hair and is wearing orange sunglasses. The boy next to him has light brown hair and is wearing blue sunglasses. The girl on the far right has blonde hair and is wearing purple sunglasses. There is a large splash of water in the background. In the foreground, a blurry object, possibly a pool toy or a person's arm, is visible.

POOLMOMENTE PRIVAT















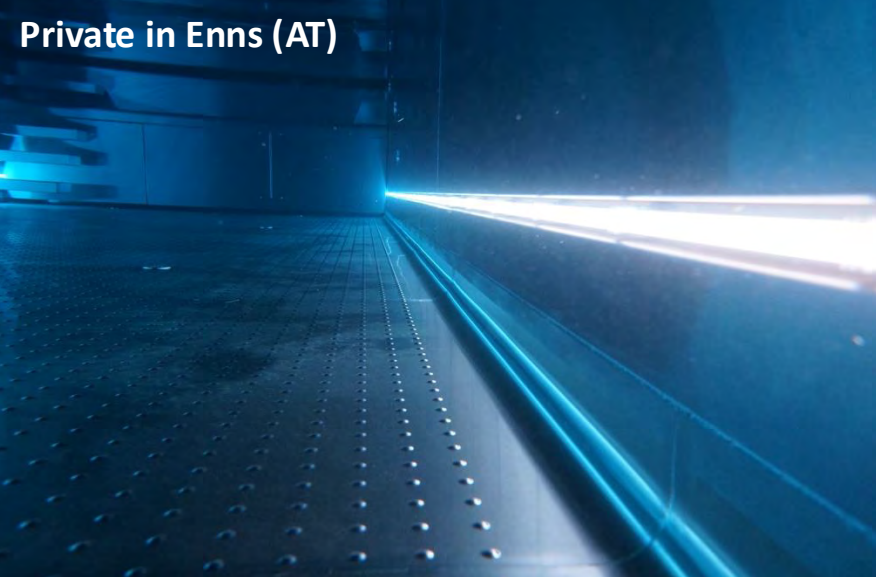














Private in Vienna (AT)



GASSNER
— EDELSTAHPOLS —

 BWT





Private in Munich (DE)

GASSNER
— EDELSTAHPOLS —

BWT















