



# AUTOMATIC SWIMMING POOL COVERS





## A **complete** range for pool **professionals**

T&A Group is the umbrella organisation over four specialists in the swimming pool sector: On the Belgian side, Technics & Applications, Covrex® and AquaCover, all manufacturers of automatic pool covers, and on the French side, Walter Pool, manufacturer of bar safety covers and mobile decks. Together, the group wants to market a complete and diversified product range in the field of protective solutions for pools and spas. All that with the company values “quality” and “service”, both embedded in the DNA of the T&A Group, well at the forefront.



4.000m<sup>2</sup>  
production

20  
employees

> 8.000  
covers/year



20.000m<sup>2</sup>  
production

70  
employees

> 10.000  
covers/year

A **competitive** product range to meet the expectations of all pool professionals.

**WaluCover:** 4-seasons bar cover

**WaluDeck:** Mobile decks

**WaluRoll:** Automatic slatted covers

**WaluSeasons:** Summer and winter covers and Protective screens for slatted covers

A **premium** range for exclusive, custom made projects.

**AQUATOP** : Automatic slatted covers

**AQUAGUARD** : 4-seasons safety cover

**SPAFLEX** : 4-seasons spa cover

**AQUA MOVE** : Movable floors

For further information:  
[sales@aquatop.be](mailto:sales@aquatop.be)



# WE'VE GOT YOU COVERED



Since 1995 T&A has been producing high end quality pool covers and has grown out to be one of the leading manufacturers in Europe. Thanks to our constant investing in innovation and product development, we succeed in maintaining our market leader position. We manufacture swimming pool covers that meet and exceed your demands and all this with an unprecedented level of service and quality.



## Quality

To ensure T&A quality, we test our raw materials and sub-assemblies before production and all finished goods will have passed by the experienced eye of our quality controllers before being installed with the customer.

## Warranty

We grant a 3 year warranty on the finished product. A network of skilled professionals will take care of the planning, installation and maintenance of the cover. This will guarantee you a carefree enjoyment of your pool cover.

## Reliability

Through years of experience, we have gained a tremendous expertise that we can draw from as far as looking for solutions to new challenges is concerned. This makes us unique in the market. On top of this, we have 15.000 m<sup>2</sup> of production and warehousing space with sufficient stock to keep our lead times short and reliable.

## Service

With strong growth in recent years, T&A is aiming to manufacture 10.000 covers by 2022. Despite this, friendliness, availability and service remain our top priorities, qualities that are greatly appreciated by our distributors.





## Safety

An AquaTop cover will contribute to the safety of your pool. Using optional locks (manual or automatic), this safety can even be enhanced. Our products meet all European safety norms, including the very strict French.

## Energy saving

The insulating effect of this cover will make a considerable difference as far as maintaining a constant temperature is concerned. Water evaporation can be countered and loss of warmth through conduction will be minimized thanks to the excellent insulating characteristics of our extruded PVC and PC slats. These factors combined will reduce the total heat loss by more than 80%.

Furthermore the temperature of your pool can be increased using solar slats which have a partially transparent upper layer and a black underlayer to retain the warmth of the available sunlight.

## Ecological footprint

Solar slats reduce the ecological footprint of your swimming pool and will warm up your pool water by a few degrees resulting in savings on the energy cost. And this for as long as the sun's for free! At night they will also prevent your water from cooling down.

## Comfort

Your comfort is important to us. Using a key switch, a remote control, a home automation system or our T&A CoverU app over WIFI, your AquaTop pool cover will work completely automatically.

## Aesthetics

T&A offers a wide range of installation possibilities to match the aesthetic design of your pool and garden.







Universal control box



External motor



In-roller motor

## Technical

We offer a wide range of motors, from external electric over tubular motors to hydraulic drives for bigger pools. This means that our products are suited for private as well as bigger public pools.

For all stainless steel parts, we make use of the AISI 316L/316Ti stainless steel. To complete the technical picture we have designed a control box that can be integrated in an already set up home automation system or that can be connected to an intelligent pool control system.

Discover the T&A production site:







## The T&A **Slat** range

T&A offers a range of 4 slat profiles: the **Origin** slat, the **Premium** slat, the **Quadro** slat and the **Covrex** slat.

### Tri & quadro extrusions

Our slats are manufactured using a tri- and quadro-extrusion process. This method gives all our slats an anti-UV coating, making them much more resistant to UV rays and increasing their lifespan by 50%. Our polycarbonate slats are also much more resistant to high and low temperatures than PVC slats. So it's possible to install such slats in any country, whatever the climate.

### Impact resistance

Polycarbonate slats are much more resistant to impact than PVC slats. All of our slats are tested in Switzerland where one has to have all materials for outside use tested on impact resistance to hail. AquaTop PC slats meet the HW3 norm, which means as much as a 100% resistance to hail showers with up to 30 mm hail stones. Our larger Premium Clean Profile slats even meet the mechanical resistance of the HW4 norm, thus resistant to hail stones up to 40 mm diameter. Hence the conclusion that our slats are not only very impact resistant but also safe and durable.

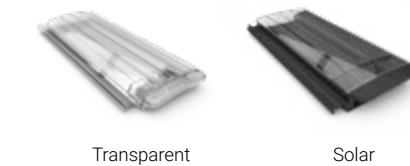
### Sealing

All of our slats are sealed with caps that are either glued or ultrasonically welded. In the case of welded caps, we have a range of click parts in several dimensions to compensate for possible differences in the width of the pool. In addition to optimal quality, reliability and durability, slats with welded end caps also ensure a neat finish and a modern look.

### ORIGIN PVC Coloured



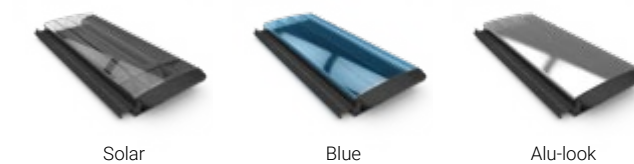
### PVC solar



### PC solar



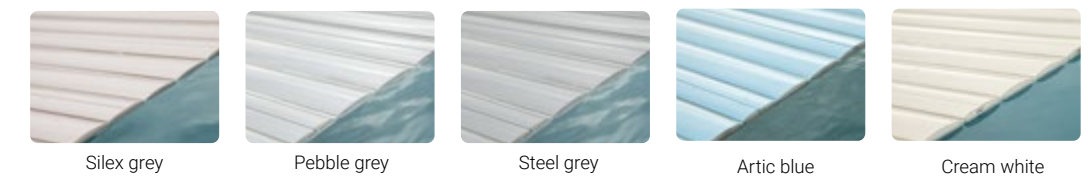
### Premium PC



### Quadro PC



### Covrex Solid slats







## Excellence through Innovation **Quadro profile**



The **Quadro** slat (introduced in 2022) is the first slat ever on the market of swimming pool covers to combine these **4** characteristics

- **Anti-algae profile**
- **Masking of condensation**  
(condensation hardly visible)
- **Optimized heating performance**  
(Black edition)
- **Complete UV-coating**  
To maximise the lifespan



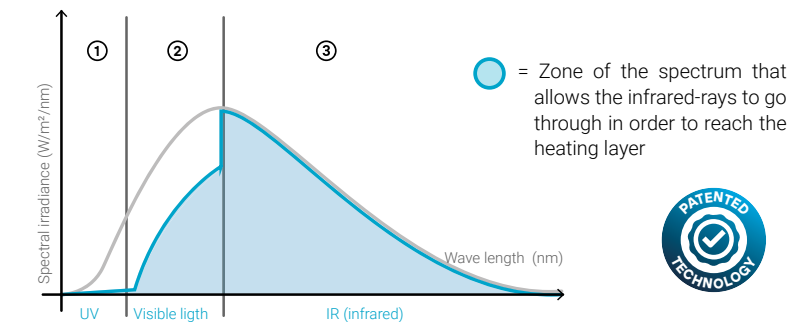
Video  
Quadro Black slat

## Traditional slats that can be found on the market are either:

- covered with an opaque layer (aluminium or other) that will decrease the visibility of condensation but at the same time reduce the solar effect
- transparent in order to optimize the solar effect. This however increases the visibility of condensation at the same time.

Thanks to the SIF\* (Selective Infrared Filter) Technology, introduced by T&A, the infrared-rays, responsible for the heating effect, can get through the outer layer yet hide condensation. It is the only slat on the market that has this feature.

### Selective Infrared Filter Technology (SIF)

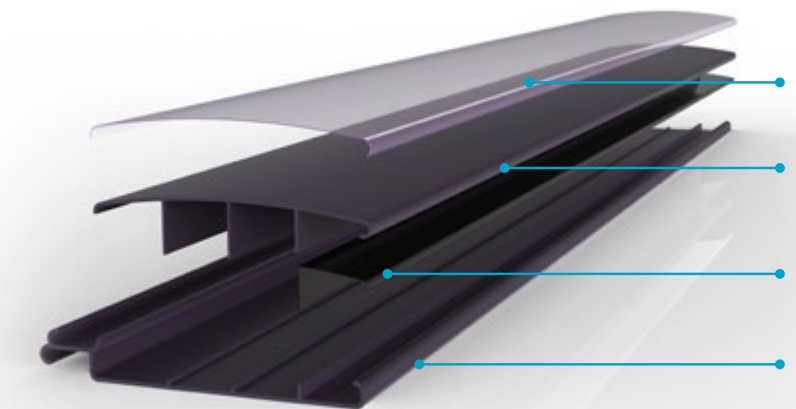
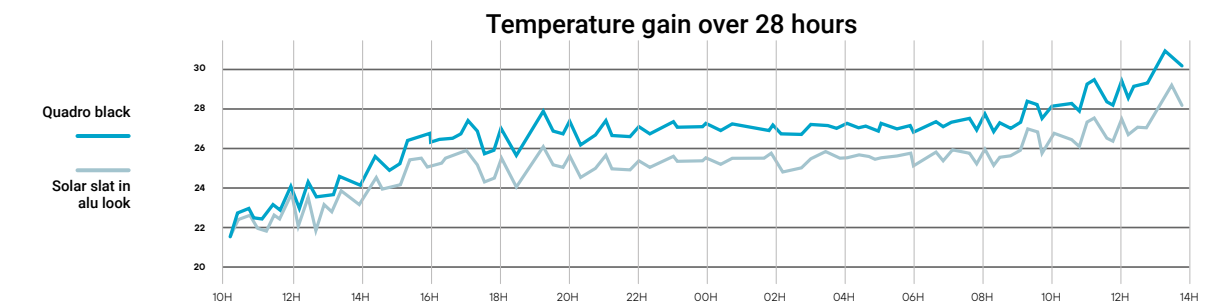


① We make use of an anti UV layer to slow down the aging process of the slat

② Our selective filter is composed of colour pigments that will guarantee the solar effect yet hide the condensation

③ In the infrared zone the absorption of solar heat is maximised.

Slats	Competing slats Solar Alu	Competing slats Solar Blue	<b>T&amp;A</b> Quadro Black
Heating effect	☹️	😊	😊
Visibility of condensation	😊	☹️	😊



**Anti UV coating**  
Slows down the aging process

**SIF technology\***  
(heating effect without visible condensation)

**Anti-algae coating**  
in the joint

**Heating layer**





## Safety

### Compliance with the French Norm NF for overflow pools

**AquaTop covers comply with the NF P 90-308 standard for overflow or infinity pools.** To achieve this, the pool design must comply with a set of specifications that define the shape of the overflow, the shape of the pool, the fixing of the overflow channel and other practical details such as pump control, slat tensioning, etc.

### NF compliance

Our entire range meets the requirements of French standard NF P 90-308v, subject to certain conditions. The equipment has been systematically checked by an independent control laboratory. Some combinations of our products however are not suitable for the French market. Your dealer will be able to provide you with advice and recommendations to help you comply with your legal obligations.

### Manual safety lock

Locking plates. Simple and effective, these plates are positioned at the end of the pool. A two step manual action releases the cover before activating the mechanism. In case you forget, Aquatop covers are fitted with an anti-snatch device.

### CoverLock: automatic locking

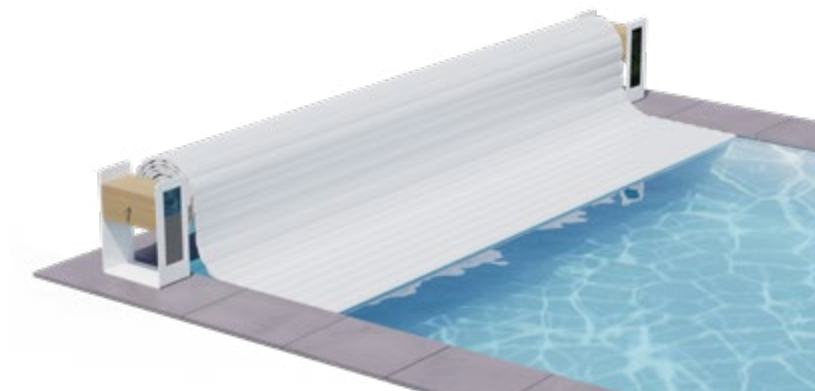
An automatic system provides undeniable convenience and removes the need to worry about securing your pool. Without any action on the part of the user, the system locks and unlocks the cover as it is operated. CoverLock uses an electromagnet for a smooth and reliable operation. What's more, its stainless steel design gives it an attractive, perfectly integrated look.







## Top Mount covers



### TOP ONE

You're already the proud owner of a pool but you want a cover that can be installed rapidly and easily? Here's Top One for you. Easy to install and with the optional built-in solar panel and battery, you can have it work standalone.

### TOP COMFORT

The rolo cover system is installed at the end of the pool. The supports in stainless steel, finished off with wooden cladding will contribute to a stylish and modern look. This system is ideal to cover bigger pools up to 10 x 25 m







## NOVA TOP

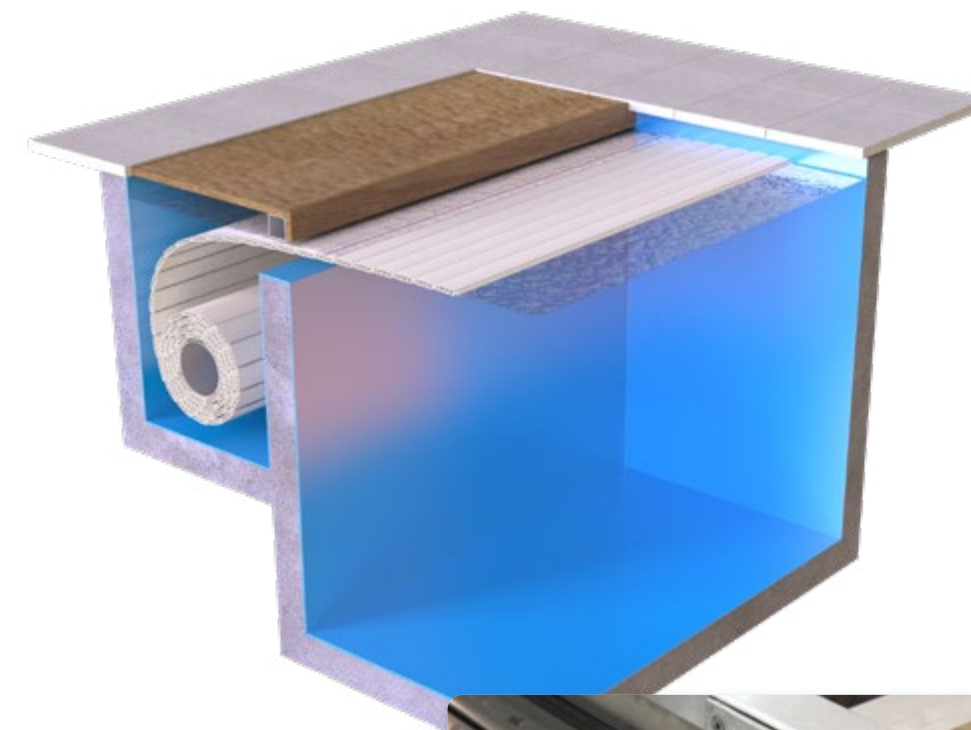
This new Top Mount system (released in 2023) is available in a closed-sided version (Nova Top +) or an open-sided version (Nova Top Light) for pools up to 5m wide. If you want to opt for a solar or mobile version, no problem, all these variants are available.







## Integrated covers



### Classic Line

Choosing for an integrated cover this is the most classic version of all. Aesthetically integrated in a separated rollo cover pit. The type of finishing is up to you : wood or stone. For pools with a high water level T&A has developed special brackets and guide wheels.



#### CoverLock

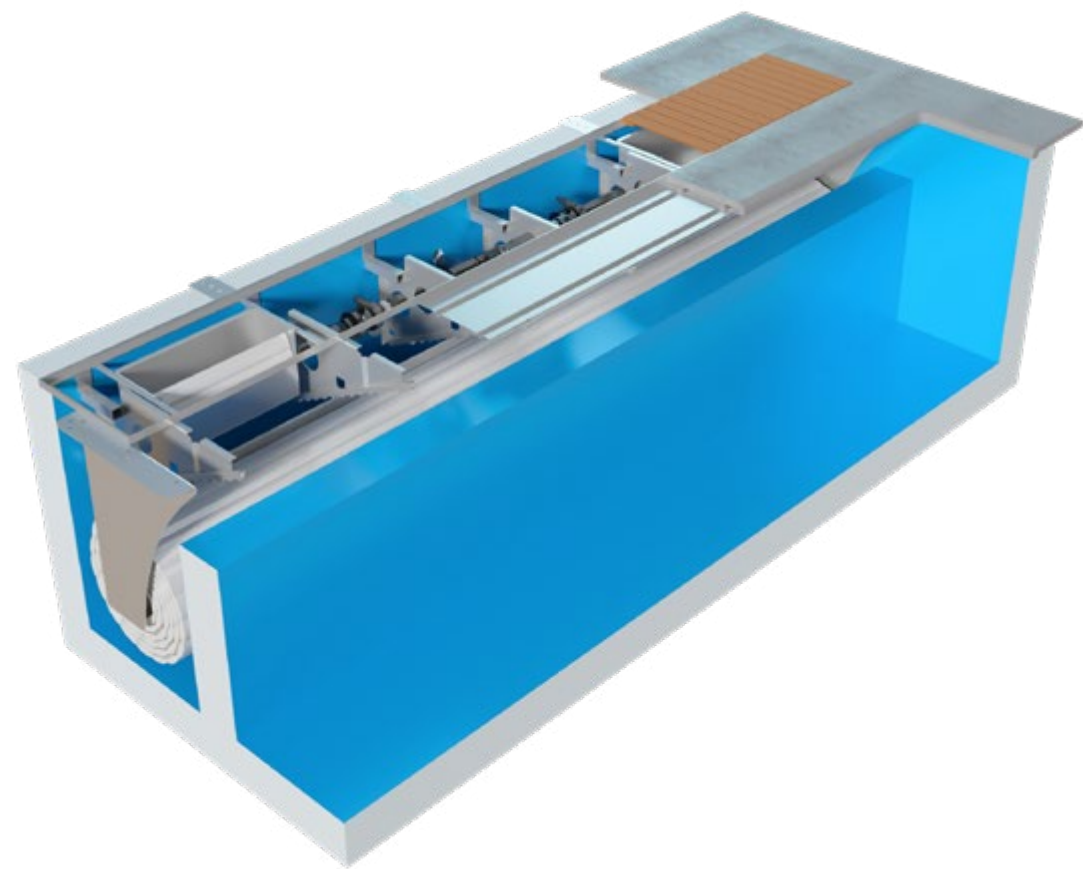
Safety first! You can choose to equip an AquaTop rollo cover with a CoverLock. This system will automatically lock/unlock you cover the moment it is closed/opened.



#### CoverWash

The cover control box will initiate a system with a booster pump and special nozzles. Every time the cover opens or closes, this system will clean the slats. The cover will remain clean and this will reduce the amount of scale and other dirt. Intensive cleaning of your pool cover can therefore be removed from your to-do list. What a godsend !





## Skimmer Line

A discreet built-in system, supplied in kit form, ideal for renovation or new construction. There is no need to drill into the walls as it is mounted on the pool edge, under the coping stone. The guiding brackets, which offer high mechanical strength, also allow a high water level.



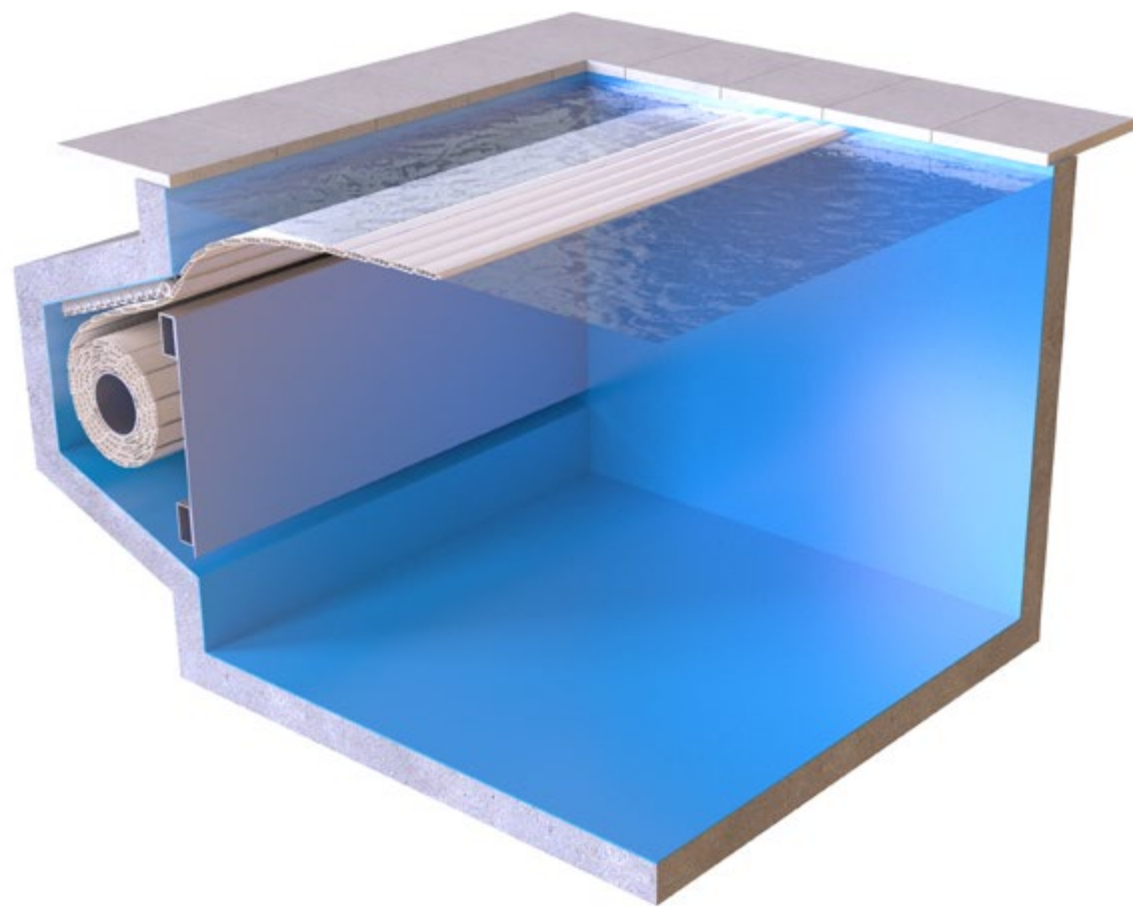




## Slim Line

The Slim Line cover, housed in a niche at the end of the pool is a variant of the Classic Line with the advantage that it has no fixations to the pool wall. Concealed under a removable decking, it can be finished in wood, stone or composite materials. This version can be fitted with a cleaning system (CoverWash) and allows a high water level through the use of special guiding brackets.



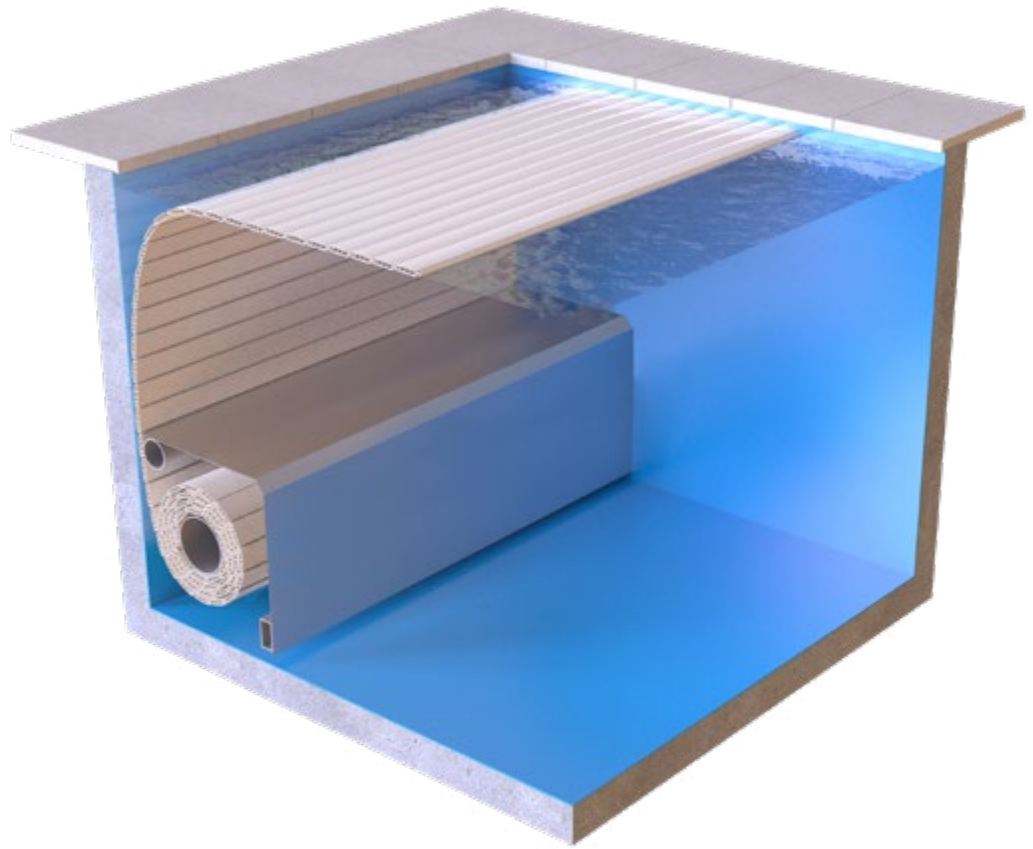


## Elegant Line

Looking for a sleek pool? Then choose a cover discretely hidden in the back wall of your pool. A panel in PVC or GFRP combined with a sloped recess prevents the accumulation of dirt. The PVC panel can be finished with a liner. The GFRP panel can be delivered in a range of colours or can be finished with tiles.



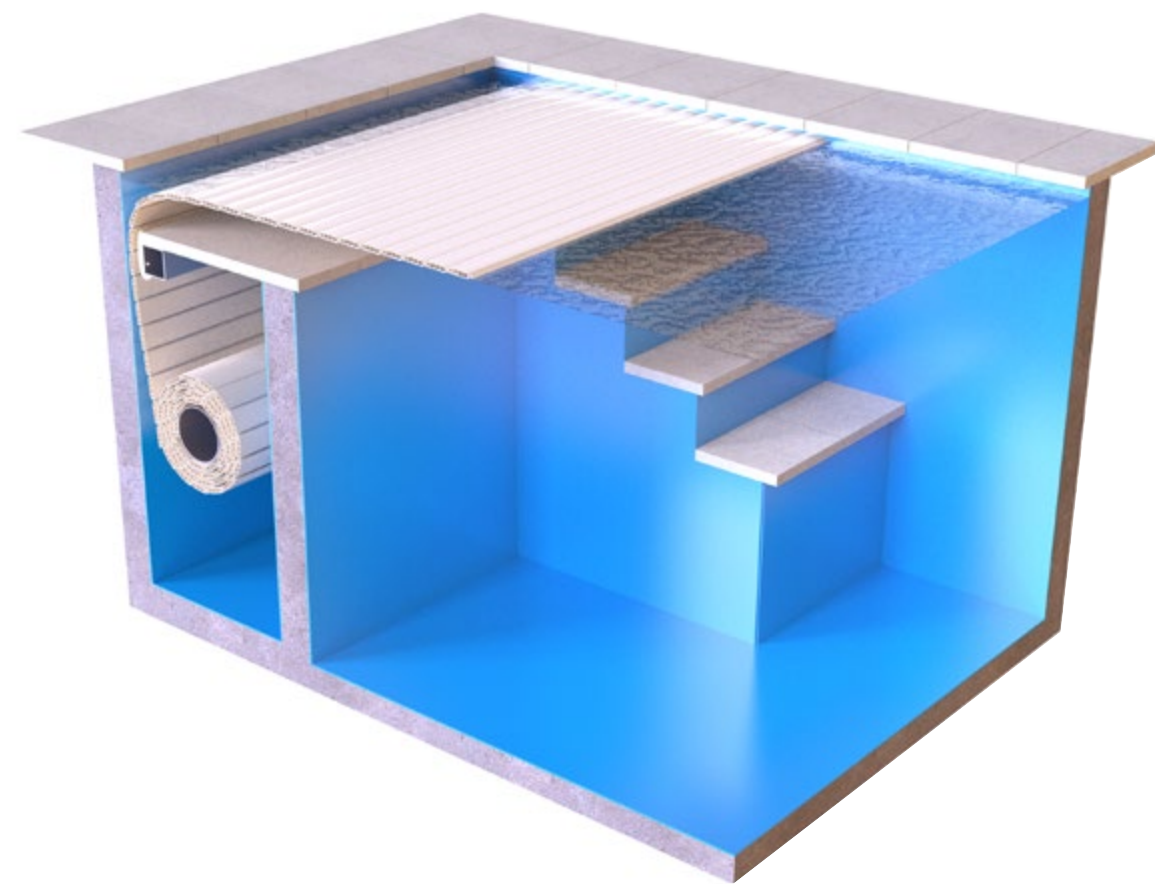




## Reno Line

The cover is hidden under a bench on the bottom of the pool. This will give you the advantage of being able to use the full length of your pool. An ideal solution when renovating. This underwater bench is made of GFRP and is available in a number of colours. If you wish, it can also be covered with tiles.





## Beach Line

More and more people opt for the possibility to put the cover under the first step of their staircase thus creating a shallow space that can be used as a relaxing zone.



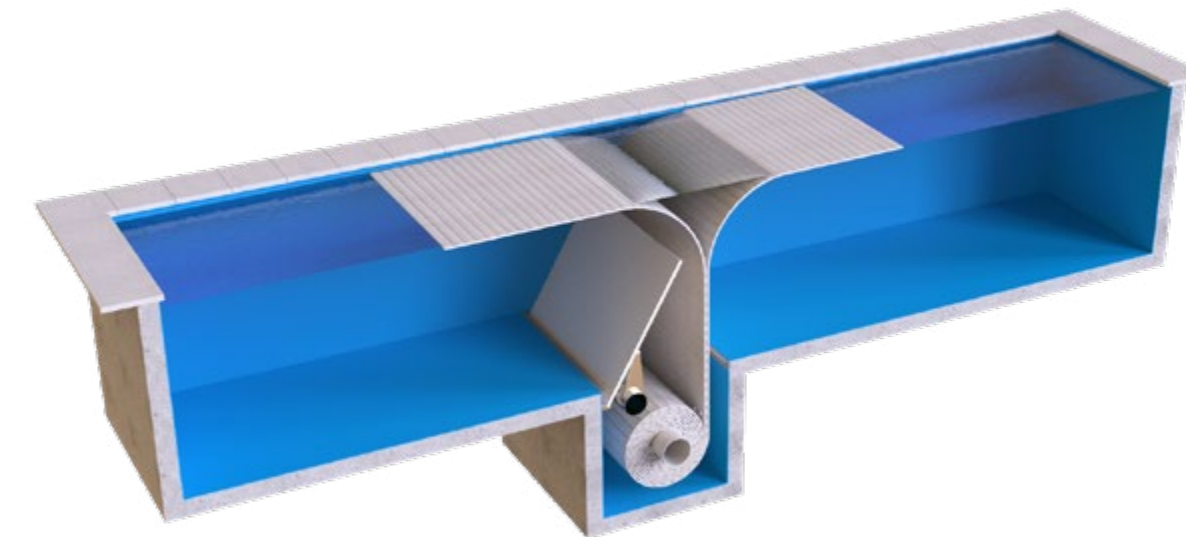
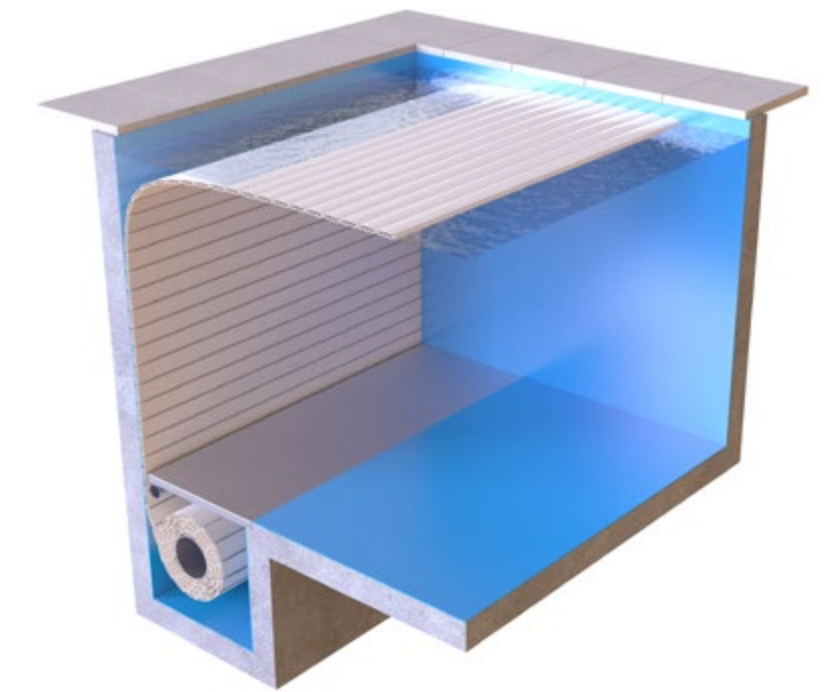




## Exclusive Line

### FIXED PANEL

The mechanism is put away in the bottom of the pool. Using a cover panel that is 4cm smaller than the rollo pit, this will create a way leave through which the cover can be rolled.



### AUTOMATIC PANEL

Using an automatic lid that will close the cover pit completely, the slatted cover will be stashed away invisibly. A so called master-slave system will be installed that will have a first motor opening the lid and a second one initiating the cover.

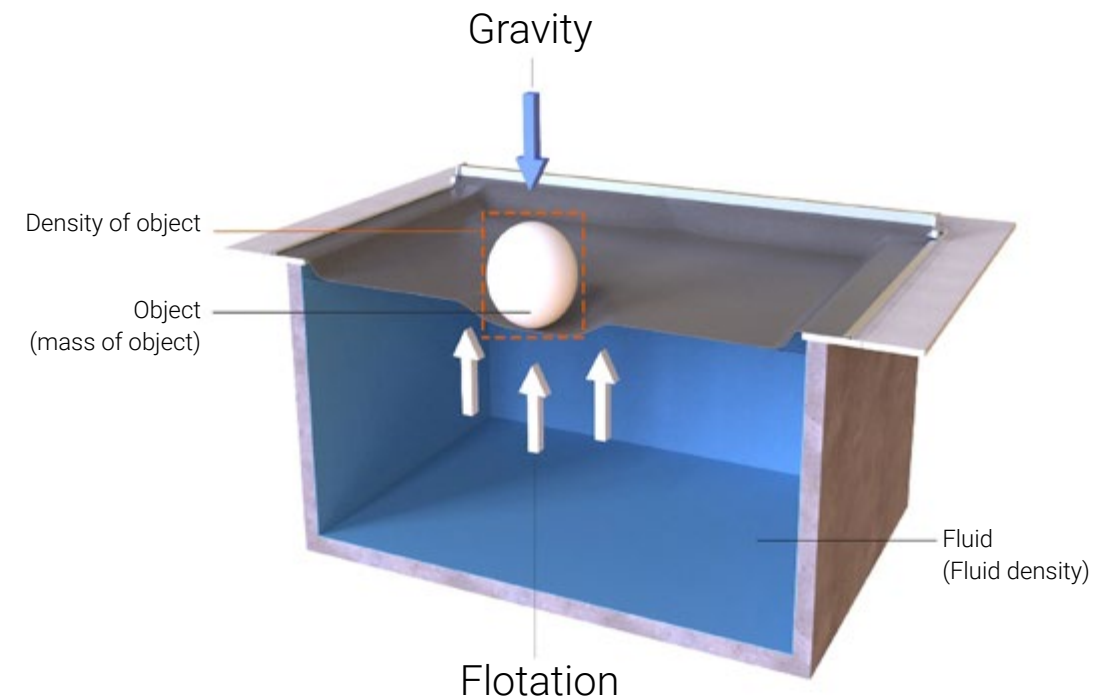




A swimming pool cover consisting of fiberglass reinforced PVC fabric sliding over the water in aluminum tracks. Your pool will be opened/closed in no time. This kind of cover can be installed on both new and existing pools and is a top product because of its safety and cleanliness characteristics.

## Safety

AquaGuard is one of the safest covers -if not the safest- on the market. The buoyancy of the water combined with the strength of the fabric will make it possible for children, adults and pets to walk over the pool. An evacuation pump delivered with the AquaGuard will drain the excess rain water from the fabric. This cover will secure itself, no need for extra manipulation. Complies with the French NF P 90-308 norm.







video AquaGuard

## Cleanliness

An AquaGuard will shut itself hermetically in a few seconds leaving no possibility for dirt such as leaves or other filth to get to the pool. All the dirt will be gathered on the fabric and can be swept off very easily. Because of its opaque finishing not only dirt but also the light will be blocked giving no chance for algae to grow underneath. Consequently you will need fewer chemicals and cleaning products.

## Energy

The fabric will minimize the loss of energy through evaporation. During day time, the pool will warm itself slightly through the heat that is generated by the sunlight and passed on through the fabric. However, this heat generation cannot be compared to that of solar slats.

## Materials

An AquaGuard is made out of a high end reinforced PVC fabric of 580g/m<sup>2</sup> with a UV resistant layer. It is available in 7 different colors to match the design of your pool and terrace. The aluminum tracks are anodized with 25 micron, which will make them corrosion resistant. A hydraulic pump group will activate the motor. Reliable, durable and safe.

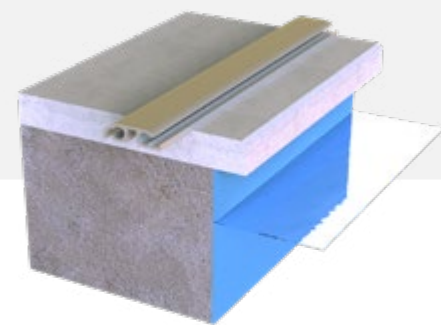
## Operating system

The fabric is guided through the aluminum tracks by means of polyester ropes with a Kevlar® core. When opening the pool, the cover will be rolled onto an aluminum tube at the end of the pool. The cover is operated through a key switch or touchscreen that is installed in a location where you have a clear view on the pool. In addition, the control board has outputs for controlling other devices depending on the position of the cover. For example, you can slow down your filter pump when the cover is closed. Good for your wallet and the quality of your pool water thanks to a more effective filtration.



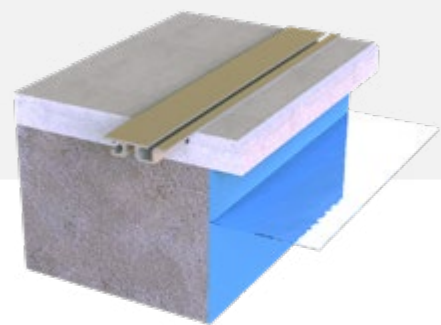


# Rail systems



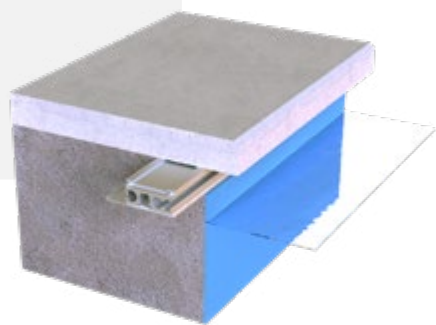
## Top tracks

The tracks are placed on the coping stones of the swimming pool. Their rounded shape will prevent you from hurting yourself.



## Flush tracks

The tracks are placed at the same level as the terrace or coping stones.



## Under tracks

The tracks are placed under the coping stones, offering a discrete and aesthetical integration of your cover.

# Fabric colors



Light blue



Dark blue



Olive green



Green



Beige



Light grey



Dark grey







## SPA FLEX

AUTOMATIC SPA  
& SWIMSPA COVER

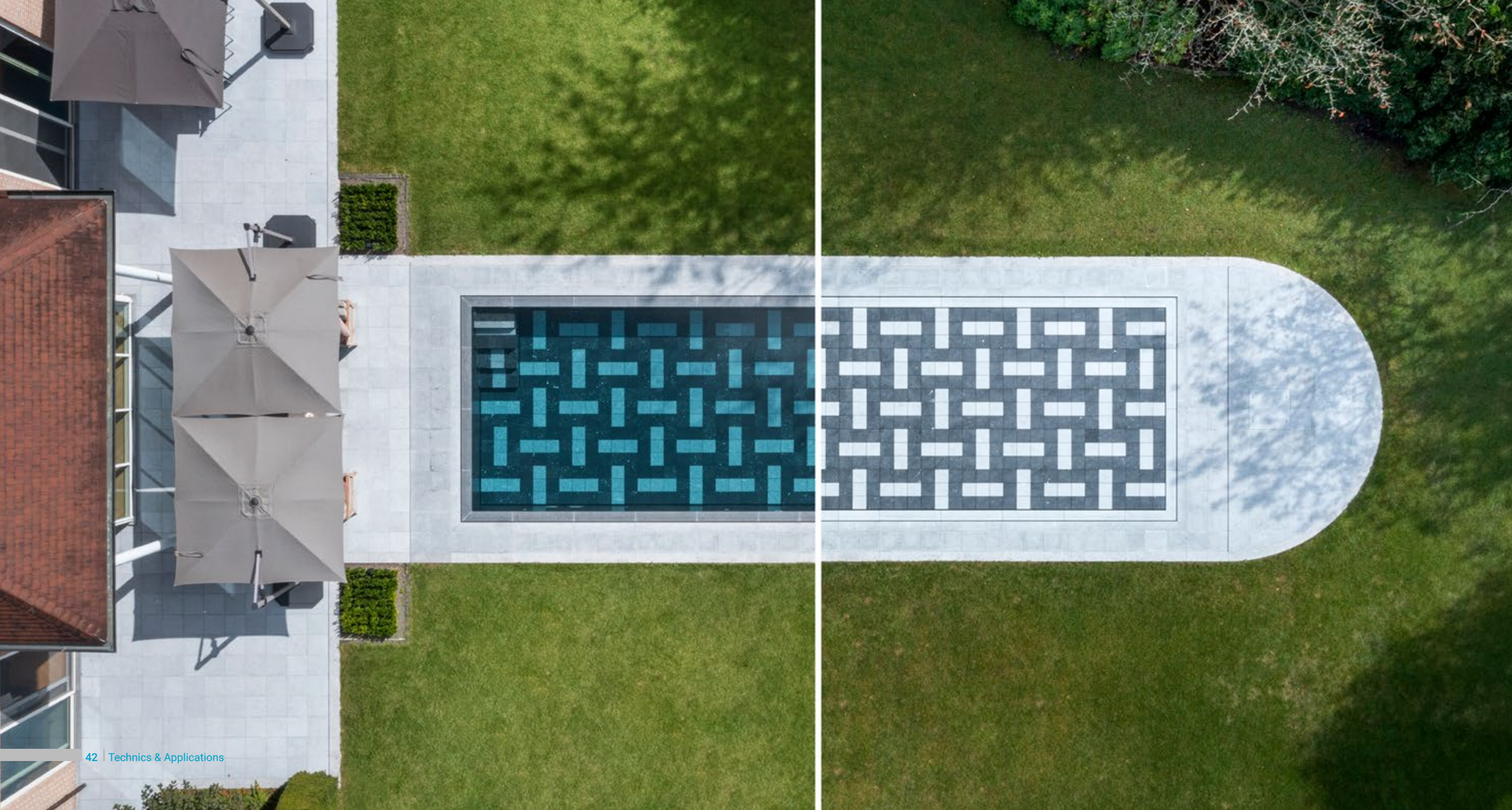
A SpaFlex is an automatic cover for a swimming or regular spa. This cover is made out of an insulating PE foam sandwiched between 2 layers of PVC reinforced fabric.

This will keep your water at an enjoyable temperature. The SpaFlex will also prevent the water from evaporating and will keep it clean.

A hydraulic motor will activate the cover. The cover can be integrated in a pit or bench finished with the material of your choice. An evacuation pump will drain the excess rain water from the fabric if needed.







# AQUA MOVE

MOVABLE  
FLOOR



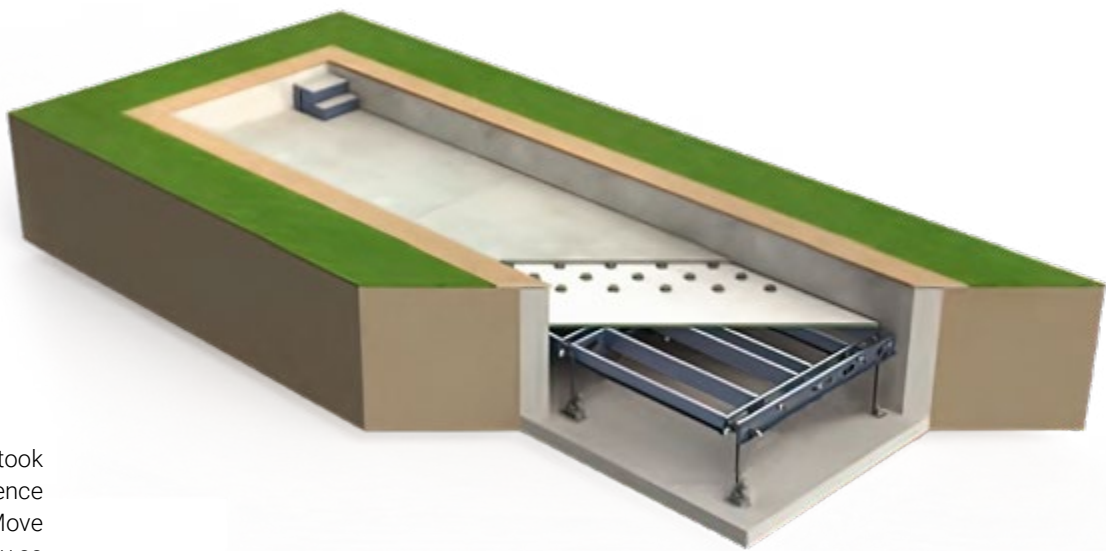
# T&A AquaMove, the movable floor that turns your pool into an insulating terrace!

## AquaMove

T&A has been manufacturing automatic pool covers for almost 30 years, and recently took over Morgana Floor in Vorselaar, Belgium. The company, with around ten years' experience in movable pool floors fits in perfectly with our group. This system, now under the AquaMove brand name, also fits in perfectly with our range of covers, with quality, safety and durability as its cornerstones.

## A unique cover with outstanding insulation

When designing the AquaMove movable floor, particular attention is paid to insulation. An insulation layer with a U value of 0.4 W/m²K guarantees payback periods of between four and seven years, depending on the model and size of the pool. Soon, our customers will also be able to simulate this via an online tool, so they can see exactly how much can be saved each year. With an AquaMove, you can extend your swimming season and minimise energy losses!



## Steplessly adjustable

A movable floor is much more than a cover. The floor can be locked in any desired position, i.e. both in the highest position to create additional terrace space and at a limited depth to temporarily transform the pool into a children's pool, for example. Thanks to the technical concept, which makes use of natural buoyancy, this can be done completely gradually and without holes or other fixing points in the pool walls. All that's required are anchor points in the bottom of the pool.

## Comfort and safety

The safety low-voltage electric drive is operated by simple push-buttons, which need to be located close to the pool. On closing, the last part is done in dead man mode, with a view of the pool to avoid the risk of entrapment.

## Installation and maintenance

T&A also takes care of the installation. The pool builder makes all the preparations based on detailed specifications. For example, extra depth must be provided for the movable floor mechanism. 40 cms for a comfort model and 75 cm for a premium model. A wall duct should also be installed for the power and control cables. We offer a maintenance contract for annual technical inspection and servicing. This way, the pool owner can enjoy the AquaMove for a long time without any worries.





# AquaMove: a custom made solution for that special project

There are three different models, with no difference in terms of insulation or aesthetics. The main difference lies in load capacity and ease of use.

## Comfort

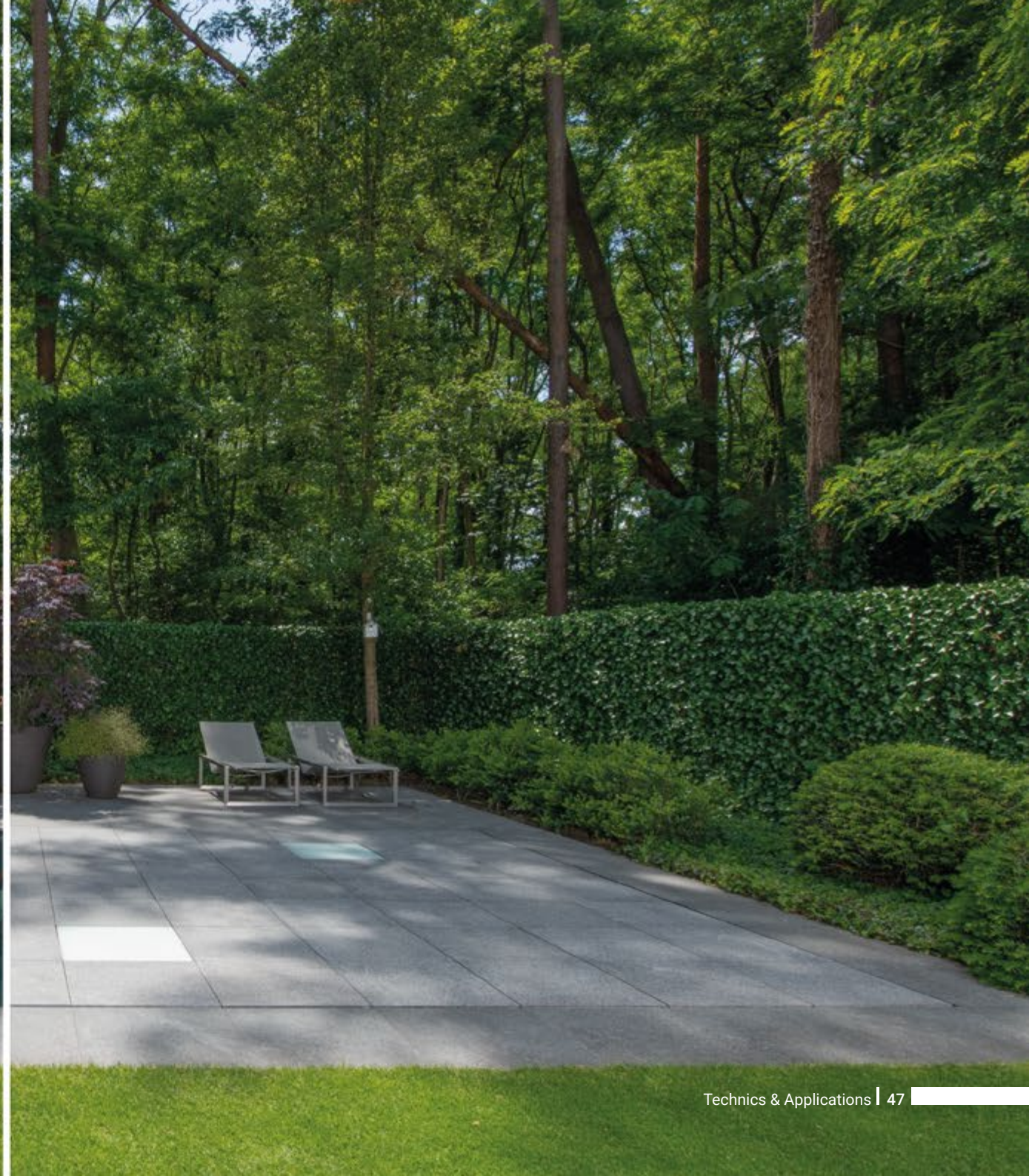
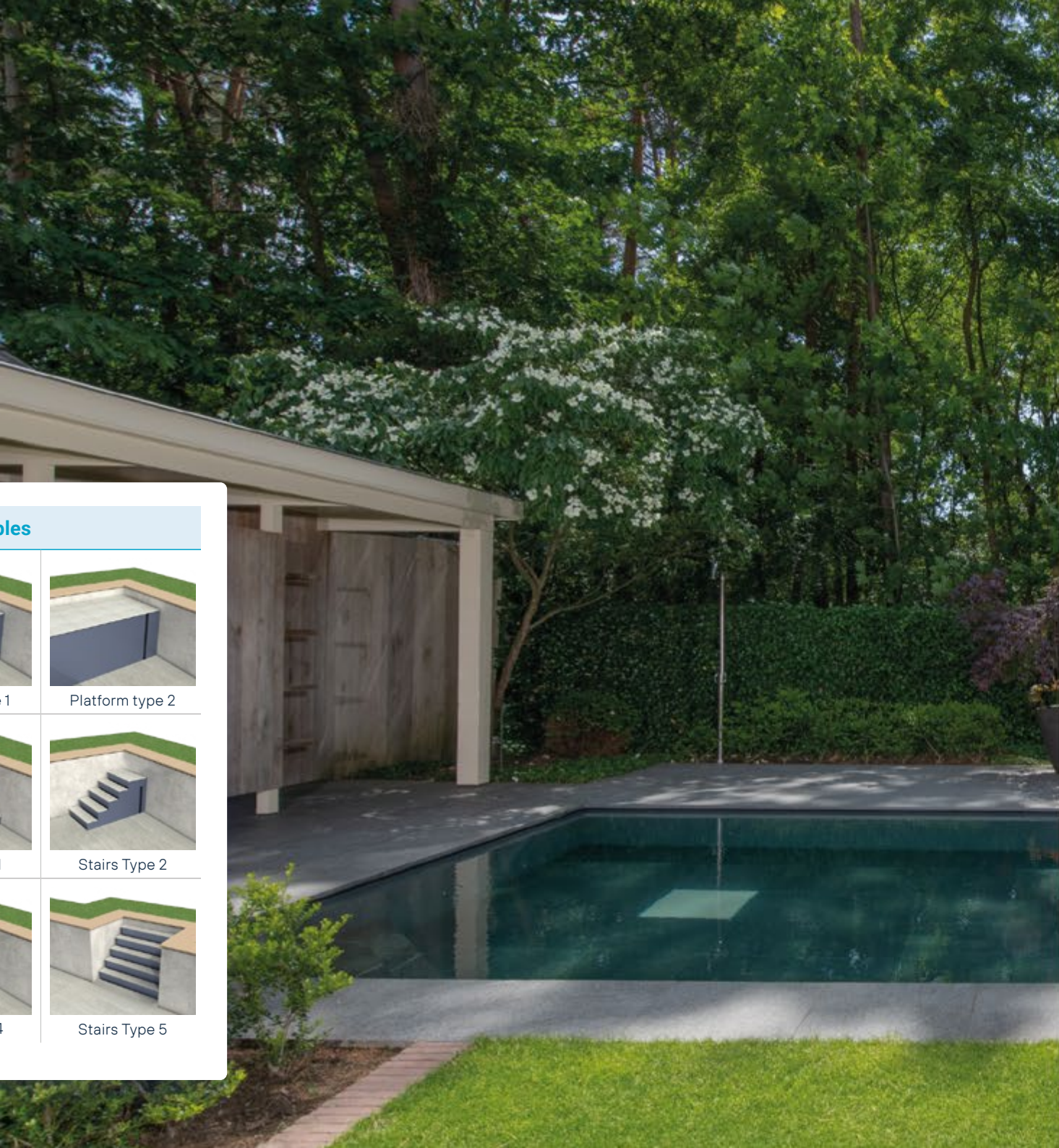
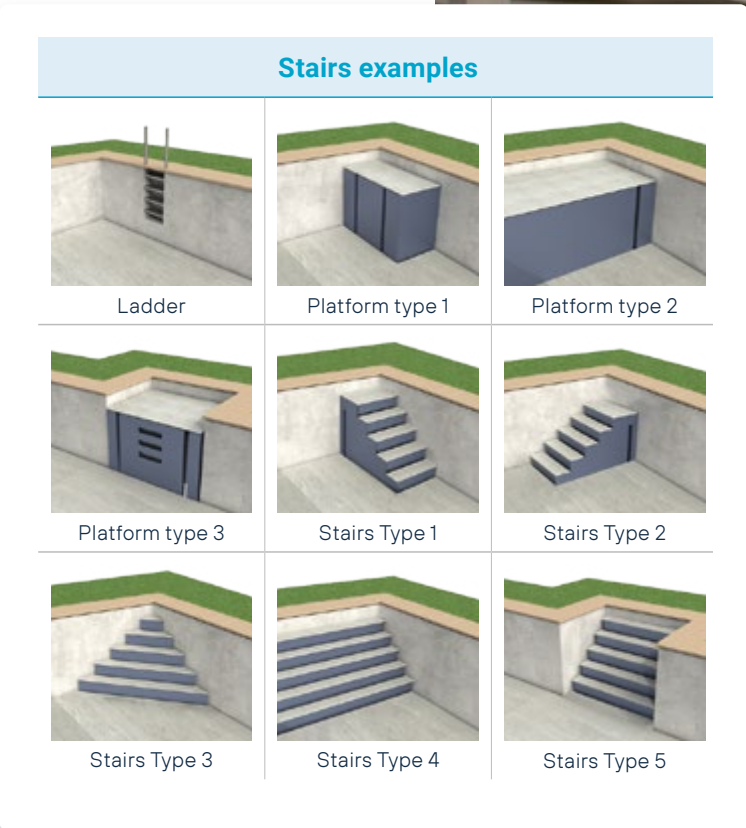
The entry-level model of the AquaMove movable floor. The advantage is mainly aesthetic, because once closed, the pool can blend in completely with its surroundings if the movable floor is made from the same material. The floor must be locked manually and has a load capacity of **50kg/m²**. It is not intended to be actively loaded.

## Select

This type is characterised by the fact that it locks automatically when closed. At **100 kg/m²**, the load capacity is sufficient to support several people without any problem, and it can be fitted with a **Stability Pack**. This ensures that the movable floor - thanks to a self-inflating rim - is locked into the structure, preventing any further movement.

## Premium

This fully automatic movable floor is equipped with **all available options** as standard and, with a load capacity of up to **200 kg/m²**, can be completely transformed into a living space.





## Custom made solutions

T&A produces covers in large dimensions for hotels, campings and public pools

## T&A energy simulator

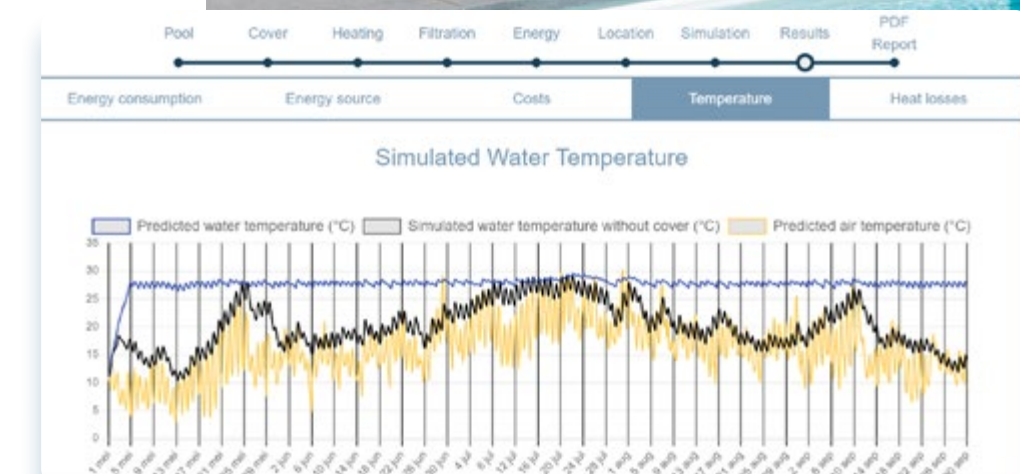
This revolutionary tool compares the energy consumption of a pool according to the pool cover selected from the T&A Group's range (automatic cover, terrace or movable floor, bar cover, etc.). Once some essential data has been entered, such as the pool's technical specifications, location (in relation to the weather in the area of residence), type of heating, etc., the simulator calculates an annual energy consumption cost. The end users can then identify the solution best suited to their project. And to their budget.

The T&A Energy Simulator allows you to :

- Calculate your pool's annual energy and water consumption.
- Compare the energy consumption of different T&A Group products
- Export an energy report in PDF format to attach to a cover quote
- Make considerable energy savings over the long term by choosing the right products.

The simulator can be accessed with your usual T&A login and password

<https://sim.sempl.energy/home>











**Technics & Applications bv**

Klaus-Michael Kuehnelaan 9 - | B-2440 Geel

T + 32 14 23 74 95 | [info@aquatop.be](mailto:info@aquatop.be)

[www.t-and-a.be](http://www.t-and-a.be)